

Silver Lake residents pass
on, and attend college
See Marie Burke's column, page 3

NJ Transit should get the
message of residents
See editorial, page 4

Olympic events not over
for Belleville swimmers
See sports, page 9

Belleville Times

© 1996

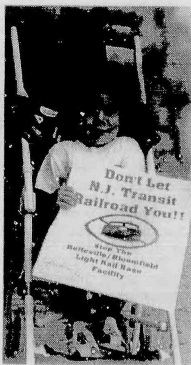
87th Year No. 45 An Orechio Publication

Serving Belleville Since 1909

Thursday, August 15, 1996

50¢

NJ Transit proposal gets heat from public



Photos by Joe Brennan

About 30 members of the Silver Lake Civic Association protested against the NJ Transit proposal outside the Essex County Vocational and Technical High School on Franklin Street in Bloomfield last week. The residents are concerned about traffic congestion and the safety of children and residents. An information meeting with transit representatives was held inside. At the right, Lea Fuscaldo holds up one of the picket signs.

By Joe Brennan

The protest began outside and continued with shouting inside as about 30 members of the Silver Lake Civic Association (SLCA) joined forces with state and local politicians last week against New Jersey Transit Corporation's proposal for a Newark-Elizabeth rail link.

A meeting was held at the Essex County Vocational and Technical High School on Franklin Street in Bloomfield for public opinion on the project, but Silver Lake residents picketed the premises before the meeting began.

The residents are concerned about traffic congestion, public safety, loss of real estate value, a decline in tax rates, and a general downgrade of the 'quality of life' in the area.

"The children are the main concern. That's why we are here. They'll be jumping on the trains. They're (NJ Transit) going to wait until someone gets killed," said

Phyllis Scanzillo, a Belleville resident who lives on Eugene Place.

For three years, NJ Transit has proposed extending a light-rail transit line for nine miles that would serve Belleville, Bloomfield, Newark and Elizabeth.

The plans also call for a vehicle base facility for maintenance purposes, located at the intersection of Franklin Street and Belmont Avenue in Belleville.

The transit plan calls for 16 new rail cars, a rail operations center, an enclosed storage building, and a police substation. The cost for the project is \$80 million on a 13 to 15 acre property.

Al Harf, assistant executive director of planning for NJ Transit, said the facility would be needed to store newer rail cars, which will replace existing ones that are about 50 years old.

Several times during the presentation of an environmental assessment, NJ Transit officials were heckled by residents in the audience who shouted, "we don't want

it," and "stop NJ Transit."

Marie Burke, president of SLCA, said the vehicle base facility is, "just a nice word for a big junkyard in a residential area."

"They will have to roll over us on the tracks. And we will put ourselves on the tracks," said Burke.

Mayor Victor Canning reiterated to the officials that the Belleville Town Council unanimously adopted a resolution against the proposal.

"I'm deeply concerned with this issue. With this you have a David, which is the residents, and the Goliath, which is NJ Transit. I'll stay on the side of David and fight it until the end," said Canning.

Councilwoman-at-large Angie Paschcia said the town would lose \$72,000 in tax rates because of land acquisition for the project by NJ Transit. She added the traffic congestion at intersections along Franklin Street would become horrendous.

"Every three minutes traffic (continued on page 2)

No Nukes...

Hiroshima remembered

By Kelly Tahaney

The New Jersey Hiroshima Day Remembrance Committee met last Thursday at the Grace Episcopal Church in Newark to remember the event on August 6, 1945.

The hundred or so men, women and children brave the sweltering heat and remembered the deaths of 210,000 Japanese and the 330,000 radiation sufferers.

There were several songs, speeches, prayers and a question and answer period.

"That was a terribly dreadful day and we want to make sure it won't happen again," Joseph Thomasberger executive director of Tri-City Peoples Corporation in

Newark and NJHRC member said.

1985 Nobel Peace Prize winner, Dr. Victor Sidel addressed the audience and spoke on several issues.

Sidel talked about how it would better serve our community to concentrate on the infrastructure of our country.

The military funds could be used for the building of roads, ending poverty and the improvement of mass transit, he said.

Also, Sidel said that there are other threats besides nuclear testing.

The domestic reactors in our country can also be used to

(continued on page 2)



Photo by Kelly Tahaney

Steve Cooper of the North Jersey Independent Alliance was selling buttons and t-shirts and informing Newark citizens about his ideas at the 8th Annual Hiroshima Day Remembrance meeting on Aug. 8 at the Grace Episcopal Church at 950 Broad Street, in Newark.

Technology obtains a boost...

Computers donated to Belleville schools

By Joe Brennan

The U.S. Army has recently given the Belleville school district an upgrade in computer technology.

Thanks to a program called "Computer For Kids," the army donated 50 computers, printers, keyboards and assorted software worth about \$100,000, said Board member Judy Piscatowski, who was instrumental in acquiring the computers.

"The computers they (the army) are disposing of, they upgrade them, then donate them. I was reaching out for companies. After I called about 20, someone told me to call the army," said Piscatowski.

Superintendent of Schools Anthony Lally will decide which schools will receive the donated systems. Piscatowski confirmed that none will be used for administrative purposes.

"It's very important for children to get hands on computer skills. If they don't get hands on experience now, when they get out to the computer field, they will be lost," said Piscatowski.

The board has also made other efforts to obtain computers for the district. At its last meeting, school officials discussed allotting over \$55,000 for 46 computers, 20 printers and miscellaneous supplies

(continued on page 2)

Byrne leads NJ Democrats

By Sarah Treffinger

Tom Byrne likes politics. So much so, in fact, that he has led the New Jersey State Democratic Committee since 1994.

Byrne, whose father is former Governor Brendan Byrne, has "always been somewhat active behind-the-scenes" when it comes to campaigns and elections.

The oldest of seven children, only Byrne and one other sibling are interested in following their father's footsteps. But, "to say politics is in the blood is an oversimplification," he said.

A graduate of West Orange High School, Princeton University and Fordham University Law School, Byrne is a resident of Princeton and is married with four children.

Of his father's gubernatorial victory that coincided with his career at Princeton, Byrne said, "My parents wound up living across the street from me (in the Governor's



Photo: By Sarah Treffinger

New Jersey State Democratic Committee Chairman Tom Byrne conferred with Public Safety Commissioner Carmen Orechio during his visit to Nutley last week.

Princeton mansion). That turned out to be interesting and made it easier for me to keep a handle on what was going on in the administration."

Since then, the 42-year-old Byrne has practiced law and now balances politics with a career in the money management business.

He was elected to a his first term as State Democratic Committee

Chairman in February of 1994 and was re-elected without opposition in December of 1995.

"I think people were happy with the progress the party made during that time," he said. "We won a lot of quiet elections and tried to pull the party together on a statewide level."

With the presidential election

(continued on page 2)

Tax group keeps watch

By Joe Brennan

Every municipality has a governing body who oversees the services of its constituents.

And every political group has a grass roots organization watching them.

The Concerned Citizens of Belleville, a group comprised of about 300 members, was born out of a fight against a \$10 million proposed public safety building in 1985, more commonly referred to

as the "Taj Mahal."

The town council wanted to demolish town hall and construct a five-story safety building, said member Vinnie Frantantoni.

Frantantoni said a group of residents diligently protested the proposal but their voices weren't heeded. Then a reporter gave the suggestion of forming a citizen group, and in 1986 the Concerned Citizens of Belleville was formed.

"We were against the cost, size,

(continued on page 2)

Resident needs \$10,000

In a previous article, we informed our readers about LuAnne Martino of Belleville who is awaiting a liver transplant. A fund has been set up to help defray the costs of her medical bills.

Martino, whose maiden name is Kressler, is a 1977 graduate of Belleville High School. She has been a legal secretary for various law firms for approximately 15 years.

Martino is in desperate need of \$10,000 by Sept. 6 for the transplant. She has been waiting for her disability benefits and has been caught up in the "red tape" of state

procedures for over five months, said her friend, Judy Olivier.

Anyone wishing to help can send donations to:

The LuAnne Martino Liver Transplant Fund, 43 Wilson Place Apt. 7, Belleville, N.J. 07109.

"LuAnne is trying to remain optimistic even though time is of the essence. All we can do is leave it in God's hands and hope that the money can be raised in time," said Olivier.

Any questions or information, please call 751-4712.

-Joe Brennan

Board members at odds

By Joe Brennan

School officials Frank Montana and Thomas Fuscaldo exchanged heated remarks at the last Board of Education meeting.

In a previous article published in the Belleville Times, Fuscaldo called for Montana's resignation.

Montana was found in violation of the school ethics act in July because he voted to have his wife placed on "game personnel" for school athletic events last October. The state School Ethics Commission gave Montana a letter of reprimand.

But Fuscaldo said the punishment was too lenient and felt Montana should resign. At the meeting on Monday, Montana accused Fuscaldo of trying to attack his status as a school board and past zoning board member.

(continued on page 3)

Rail line meets vast opposition

(continued from page 1)
would be stopped for 30 seconds. It doesn't take a brain surgeon to figure out if this project goes through it will be a living nightmare," Pascerchia said.

Not every resident of Belleville expressed opposition to the project. Larry Walsh, chairman of the District Partnership of Silver Lake, said certain businesses in the area favor the proposition.

"You might not want it, but there are a lot of businesses who want it. Overall, we feel this could be an economic boom for this area," said Walsh.

There were also alternative plans presented at the meeting. Bruce Hain, a Belleville resident who formed the grass roots organization Citizens for Sensible Transportation, devised his own plan for a maintenance facility, located at the present Franklin Avenue Subway Terminus in Newark. He has submitted this idea to NJ Transit.

"Mine has not been considered. They've cancelled me and my plan," said Hain.

Hart said he couldn't comment

on whether or not NJ Transit will rethink their plans because of the opposition.

"It would be presumptuous for us, fresh on the heels of a meeting like this, to answer a question like that. We will reflect on the reactions and determine which reactions can be diffused. There's more fact finding needing to take place," said Hart.

Details of the plan include:

- * Construction of a one-third mile two-track light rail connection from the Newark Franklin Avenue station to Bloomfield's Industrial Track.

- * A half-mile extension of the single track Bloomfield line into a multiple track, from Franklin Avenue in Newark to Bloomfield Avenue in Bloomfield.

- * Reconstruction of existing freight railroad grade crossings at Franklin Street in Belleville, Belmont Avenue in Belleville, and Grove Street in Bloomfield.

- * Combine the existing Franklin Avenue and Heller Parkway Newark City Subway stations into a single new station.



Suzanna Teemer

BHS grad studying in Israel

Suzanna Teemer, a 1994 graduate of Belleville High School, is in Israel where she is involved in a one-year study program.

Having completed her freshman and sophomore years at Mount Holyoke College, Mass., where she is majoring in psychology and education, she will study during her junior year at The Hebrew University of Jerusalem.

Group focuses on poverty

(continued from page 1)
manufacture crude bombs if necessary, Vidal said.

Other discussions involved the removal of nuclear waste products from our state.

"There are 516 nuclear facilities in New Jersey and they are now trying to get some towns to accept the waste in order to receive tax privileges," Sylvia Zisman member of the remembrance committee said.

Zisman said that there are plans to transport our nuclear waste to a site in Nevada.

This could prove extremely dangerous if an accident or terrorist act should occur during transport, Zisman warned.

Recently, there was a non-proliferation of weapons treaty that most countries (the U.S. included) have signed.

This treaty is being boycotted by India because it is without a specific time frame, Zisman said.

If any is interested in receiving more information about the Hiroshima Remembrance Committee write to: P.O. Box 934, Springfield, NJ 07081.

Irish person of year named

The Belleville Irish-American Association has announced that James Whelan has been named Irish Person of the Year.

Whelan will be honored at a dance to be held on Sunday, Sept. 29, from 5 p.m. to 9 p.m. at the Belleville Knights of Columbus Hall. Tickets are \$15, which includes entertainment by Richie O'Shea, a limited bar, coffee and cake.

For tickets, to place an ad in the ad journal paying tribute to Whelan, or for further information, please call Pat at 751-5308 or John at 759-0383.

Residents make dean's list

Three Belleville residents were among the Jersey City State College students named to the dean's list for the spring semester.

The Belleville students were Marianne Calabrese, Jan Philip Santos and Donald Taylor.

Students on the dean's list attained a semester average of 3.5 or higher.

\$ COUPON SPECIAL CAR WASH \$

\$5.99 + Tax
For Full Service

Exterior \$5.25 + Tax
(with This Coupon)
Expires 8/31/96

FRANKIE'S FUTUREMATIC BRUSHLESS CAR WASH

305 Broad St. • Bloomfield
748-9459
Open Mon. - Sat. 8-6
& Sun. 8-4

Watchdog group keeps eagle eye firmly intact

(continued from page 1)
and loss of the existing structure," said Frantantoni. "As a result of us forming the group, we deflated the Belleville Town Hall Public Safety Building."

Edith Defeo, president of the group, said the organization is a watchdog for "high taxes, spending foolishly, double dipping and very poor management."

"I think management should be better than what it is," said Defeo.

Defeo has additional ideas concerning town management. She said each department should be able to keep its reserve budgeted monies instead of handing over funds for the overall budget.

She would like accumulated overtime pay for vacation and sick days be given to employees at the rate when they would have normally received it, not at current rates.

Defeo would also like the council to have state auditors scrutinize the budget.

"I feel they should go for it. I feel there's parts in the budget that could save us tax dollars," said Defeo.

Some council members have no problem with having the state audit the budget.

Angie Pascerchia, councilwoman-at-large, said she contacted the state on this matter.

"I still want the state to come in and perhaps give us direction on where to cut. I would also like to see the Board of Education do this," said Pascerchia.

Fourth Ward Councilman Mario Drozd said he would inquire as to the steps taken by the state.

"There's probably a lot of questions I would ask. I have no idea how they do it," said Drozd.

Questions are what members of the group ask at just about every council meeting. And when Frantantoni doesn't get answers, he writes letters. One of which, based on the safety building, received 67 phone calls.

"I'm putting my thoughts together. I'm going to write a book," he said.

Frantantoni was elected as commissioner of Parks and Public Property in 1987 and served for

three years.

"There was 136 violations and I fixed all of them," said Frantantoni. But since that time, Frantantoni has been immersed in the tribulations of town taxpayers.

"You're at the mercy of the politician who will say anything. Nobody thinks. People have finally had it. We can't get the money from anywhere anymore," he said.

Schools get computer donation

(continued from page 1)

from OVA-USA in South Plainfield.

Lally said this move is part of a 5-year plan initiative to upgrade computer technology throughout the district into the year 2000. He wants to implement the computers for the start of the 1996-97 school year.

"Three months ago, a formal presentation was made as to where the district should be taken regarding technology. We're on our way," said Lally.

Lally said the three main objec-

tives with the computer acquisition are an upgrade of the business department, the mathematics classes at the middle schools and high school and "introducing to a greater extent the technology in libraries in the middle schools and high school.

"This is what we are striving to get through without delay," added Lally.

The School Board Technology Committee will meet this week with Victor DePaul, chairperson of the Belleville District Technology Committee to discuss questions board members may have.

INTERNATIONAL
Electrical & Flag Decorating Corp.

15% DISCOUNT WITH THIS AD

Cash & Carry Flower Shop

CHRISTMAS LIGHTING • BAZAARS & FESTIVALS • FLAGS & BUNTING
SIGNS • TRUCK LETTERING • MAGNETICS
- Banners Made To Order -
(201) 429-3111 Fax (201) 743-9807
131 Franklin St. • Bloomfield

School of the

Garden State Ballet

BALLET • JAZZ FALL CLASSES
Starting September
Fred Danielli MTR.
Children • Teens • Adults
Beginner to Advance
28 Glen Road
(Off Park Ave.)
RUTHERFORD
939-3398
REGISTER NOW
Non Profit School

Joe's ALIGNMENT SERVICE

Ask For Mr. "B"
201-759-9779

Mon.-Sat. 8:30AM to 6:00PM
OPEN LATE EVERY WEDS. TILL 9PM - BY APPOINTMENT ONLY

Cars • Trucks • Vans • 4x4's
Foreign & Domestic
Wheel Alignments • Brakes • Tires
Balancing • Welding • Mufflers

368 Franklin Ave. Belleville

GRAND OPENING
WILL BEAT ANY WRITTEN ESTIMATE

PHIL'S AUTO BODY

Complete Bodywork
Custom Painting
Flange
Frame & Welding

Industrial Machinery
Sand Blasting
Trucks, Trailers, Boats, etc.

3 CLEVELAND ST. • BELLEVILLE, N.J.

ANTIQUE & CLASSIC CAR RESTORATIONS

RENTALS AVAILABLE

Please call Paul Burns
759-0300

FREE PICK-UP & DELIVERY

\$100 OFF Any Paint & Body Work Valued at \$500.00 or More Labor Only	\$100 OFF Your Insurance Deductible Just Bring in your car and we'll give you \$100. off your Insurance deductible	\$200 OFF Any Paint & Body Work Valued at \$1000.00 or More Labor Only
---	--	--

COMING SOON!!

BANK WHERE YOU SHOP!

~7 DAYS A WEEK~

Security National Bank & Trust Company
of New Jersey

- New In Store Location -

KEARNY SHOPRITE
100 Passaic Ave. • Kearny N.J.

A Complete line of Banking Services
ATM Machine

Watch For Our Grand Opening

Security National Bank & Trust Company
of New Jersey
Newark • Nutley
201-643-5700

Air Conditioner Broken?

NO

Replace it *now*

Payments Interest 'til Jan '97 Kidding!

Since 1904, Bryant is the first to offer tomorrow's technology today!
A United Technologies Company

bryant
Heating & Cooling Systems Since 1904

BLOOMFIELD COOLING & HEATING INC.

SALES • SERVICE • INSTALLATION • RESIDENTIAL • COMMERCIAL

CENTRAL AIR CONDITIONING & HEATING
Free Estimates • Fully Insured & Bonded

ELECTRIC SERVICES
HOT AIR FURNACES
AIR CLEANERS
HUMIDIFIERS

EMERGENCY SERVICE
338-7826
BLOOMFIELD, NJ

OUR OPINION

NJ Transit: Will they ever get the opposition's message?

With tempers raging as hot as the room where the meeting was held, the recent community opinion session held by NJ Transit gave new meaning to the phrase 'public opposition.'

NJ Transit recently presented their environmental assessment to about 50 members of the Silver Lake Civic Association (SLCA) and local and state politicians at a meeting held at the Essex County Vocational and Technical High School in Bloomfield.

The transit corporation wants to extend an existing rail line through Franklin Street in Belleville and construct a vehicle base facility on the intersection of Franklin Street and Belmont Avenue. And residents have been opposed to the proposal for the same three years NJ Transit has been holding the information sessions.

The meeting became a clash of public outbursts vehemently opposing the plans and testimony from NJ Transit representatives.

A few interesting verbal exchanges took place that require analyzing. Marie Burke, president of the SLCA, said she spoke to a top administrator of NJ Transit and told her how much against the proposal residents were. The interesting part was the response. The administrator said something to the effect of "choo-choo, we're coming through."

Besides the fact that the response was pompous and slightly infantile, it shows that NJ Transit is determined to proceed with their

plans.

The question then becomes twofold. What are the real purposes for the meetings? And will NJ Transit respect the residents enough to take their suggestions to heart?

Representatives contend that all of the opinions expressed by residents will be scrutinized by the transit's board of directors and the Federal Transportation Administration (FTA). But how loud do the residents have to shout?

Another interesting aspect of this story is, after the town council and residents have rejected the proposal, NJ Transit can still proceed with their plans. The main reason is the federal governing bodies overrule the state, the state overrules the county, and so on.

The irony is this leaves the residents on the bottom of the list, even though representatives of governmental bodies are there to serve the people.

The people have responded and know why this proposal wouldn't be good for the area because they live in the area. It's up to those in power to heed their warnings and protect and serve them.

NJ Transit can hire all of the traffic experts and engineers they want. Nothing beats empirical knowledge, including a college degree. The residents have the life experience of the area and that's the only experience they need.

Remembering past battles to combat today's social problems

The images of war, no matter what battle, is a graphic remembrance of our country's history.

But not until recently, a group known as the New Jersey Hiroshima Day Remembrance Committee has been trying to focus attention on eliminating poverty by not forgetting the devastating effects of atomic and nuclear weapons.

The mission statement from the group is quite clear. "Our purpose is to urge the community to join the struggle against the continued build-up and use of nuclear weapons."

Although this might seem like a difficult goal to accomplish, especially in today's times of nuclear tests and high defense spending, it is one that should receive respect.

The committee recently held a "Hiroshima Day Observance" at the Grace Episcopal Church in Newark to provoke reflection about the fateful day of August 6, 1945.

About 100 dedicated people were in

attendance to hear Dr. Victor Sidel discuss his opposition to the use of nuclear weapons. Words that shouldn't be taken lightly simply because of the many heavy ramifications.

In examining whether or not we should spend more money and time on developing nuclear weapons, the answer is best found by looking at what we already have.

Several detailed accounts have suggested the world powers possess enough nuclear weapons to blow up the world a ridiculous amount of times. Purely an end to any means, or any life for that matter.

Whether or not the committee is successful in opening up the eyes of enough people shouldn't supersede the recognition they deserve.

Poverty has been around and will, unfortunately, be in existence for a long time. And any attempt at refocusing the need to help people should be concentrated on. This includes nuclear weapons and any other means of destruction.

Quotables

The way up and the way down are one and the same. -- Heraclitus

A wrongdoer is often a man that has left something undone, not always he that has done something. -- Marcus Aurelius

Literature is news that stays news. -- Ezra Pound

Quarrels would not last long if the fault was only on one side. -- La Rochefoucauld

Belleville Times

Serving Belleville Since 1909

(USPS 049-220)

Publisher: Belleville Times Inc.

Published Every Thursday
At 155A Washington Ave.
Belleville, N.J. 07109

Second-Class Postage Paid
At Newark, N.J.

Postmaster: Send address changes to:
The Belleville Times, 155A Washington Ave.,
Belleville, NJ 07109
© Copyright, 1996, Belleville Times, Inc.

Editor: Joe Brennan
Social Editor: Helen Maguire
Sports Editor: Michael Lambert
Advertising: Joseph Scaperrotta
Art Director: Diane Lombardi

All departments call:

759-3200

Fax: 687-3994

Annual Subscription: \$16.00
Senior Citizens: \$ 8.00

YOUR OPINION

Resident responds to Montagna story

To the editor:

I would like to respond to the article on the front page of your paper, dated July 25, regarding the situation regarding Board of Education member Frank Montagna.

To Mr. Montagna, the \$112 you voted for, on your wife's position on the board, may not seem to much money to you because it's only the taxpayers' money. I know two women, friends of mine, who could really use that money. Mrs. Montagna didn't need that money, she has a very nice position at the A&P (pardon the commercial) and she has been employed there for a number of years. On the other hand, these two women I mentioned, worked very diligently on your campaign for the board of education seat you won, and really needed the position you promised them, that you gave to your wife.

And Ralph Mazzuca, president of the board, I could appreciate your remaining silent on this situation. Due to the fact that you appointed your wife as a teacher in the school system, and if you said anything, it would be like the pot calling the kettle black.

Mr. Louis Pallante, another member of the board, you're another gem. What did you do in this matter?

You don't want to make any waves. And during your campaign, when I was breaking my back to help you, I realized, I was backing the wrong candidate, when I started seeing the Ferrara family coming around, like Jerry and Mrs. Ferrara, who have been sponging off the taxpayers for years, in county and state jobs or whatever was available.

Board member John Notari, you're running neck and neck with Mr. Pallante, like a wet spaghetti... By staying neutral, you're saying, the hell with the kids and the school system. You don't know what it's like to pay taxes in Belleville or to be a parent, because you don't own property or have children in school. In conclusion, I'd like to leave you with this thought. When anyone runs for political office and wins, this is a great honor for the candidates. We trust and believe in you. But, in this case, the senior are being murdered, because they live on Social Security benefits and, this, places a strain on their budgets.

I've been in contact with the public all my life, and heard the seniors lament on high taxes in this town and you guys couldn't care less. But I do and I'll make sure I'll rectify this situation.

Jackie Rega

Councilwoman speaks out against transit proposal

This letter was also sent to Governor Christine Whitman.

To the editor:

As an elected official in the Township of Belleville, I and my fellow council members have worked hard to insure that our community preserves its residential character and provides a stable environment for our citizens. We have seen redevelopment take place in our central business district, which is beneficial to the town's tax base. I have encouraged that type of activity since the benefits of redevelopment are obvious.

Most recently we had an application for the redevelopment of the Macy's warehouse located on Franklin Street in the townships of Belleville and Bloomfield. A developer is proposing to demolish an existing 500,000 square foot warehouse and build a new shopping center in its place.

The reason I point this out to you is because New Jersey Transit presently has plans to acquire property in Belleville and Bloomfield adjacent to the shopping center, where they plan to construct a rail repair yard and extend the Newark City Subway. Even though I serve on the Council in the Township of Belleville, we have not received what I would call "candid" information from New Jersey Transit. As a


matter of fact, we have received very little information from New Jersey Transit with regard to this project.

It is my understanding that New Jersey Transit intends to run a light rail line across Grove Street in the Township of Bloomfield, Belmont Avenue and Franklin Street in the Township of Belleville, and Franklin Avenue in the City of Newark, to tie into the existing Newark City Subway.

While I understand the necessity of a modern rapid transit system, I do not believe that it can be appropriately located in the area where there is a high volume of traffic in close proximity to two elementary schools in both the Townships of Belleville and Bloomfield. As a matter of fact, there are two elementary schools within less than a block from where this expanded system is proposed.

It appears to me that the reason New Jersey Transit is extending its services from Newark to Bloomfield is to justify the construction of the rail repair yard in the Townships of Belleville and Bloomfield.

Angie Paserchia
Councilwoman-At-Large
Township of Belleville



Of All Things

By Frank Orechio

A feature of the Nutley Sun, Bloomfield Life and Belleville Times

• HERE we go again. The question is, "Should English be the nation's official language?" Last week, a congressional committee narrowly approved a bill making English the official language. During the debate, both Republicans and Democrats, in five hours of partisan debate conceded that English is the main language of government, commerce and everyday life in this nation. Republicans are sparking the bill, observing that there is a worrisome trend toward creating language ghettos leaving immigrants out of the job market. Democrats practically unanimously objected, charging legislation was built on bias and bigotry. The Clinton administration strongly opposes the bill. One example of the problems of a multi-language community is California where it is reported that 25 different languages are spoken. I know that when my mother and father migrated from Italy at the turn of the century, they understood among their high priorities was to learn the English language. Almost every country of the world has a recognized common language.

• I RECENTLY was among the privileged to receive an invitation from National Republican Chairman Hatley Barbour to attend the convention to be held in San Diego August 11th through the 15th. My domestic responsibilities do not permit me to leave Nutley, so I will have to take in the excitement via television.

• REPUBLICANS charge that Medicare lost \$90 Billion

last year - that as a result of President Clinton's veto, Medicare was "sent into bankruptcy even faster than was predicted." My personal Medicare works O.K. I haven't seen any credible statement either in the press or television alleging that Medicare is bankrupt.

• FROM the widow to the grandson, family members took to the lectern recalling the unusual life of a great warrior, Bernard "Bay" Rabinowitz. As time puts distance between his departure and the future, the loss of Bay Rabinowitz becomes more painful. The only saving grace is that among those of us who knew him well, he lived a life that made a difference - and having said that, the highest achievement of a mortal is that very difference. As time marches on, his family and personal friends of Bay can find comfort in the years that his life touched ours, and we became better human beings for it.

• IT is with sadness that we learn of the death of Sandra Lee DeCotis, the beloved wife of Bob DeCotis. She leaves two sons, two daughters, nine grandchildren, her mother, sister and brother. At 51, Sandra Lee was much too young to die.

• I RECEIVED a very pleasant surprise with the Tuesday morning mail. A belated birthday gift from a former Belleville activist who created the slogan, "It's Better in Belleville," Jaye Tarantino. She was a dynamic force as president of the Belleville Chamber of Commerce and left shoes not yet filled. In a

recent visit to Italy, which coincided with my birthday - June 12th - she was blessed by Pope John Paul II and was fortunate to obtain a close-up photograph of the Pope.

Jaye, my deep-felt thanks for remembering me as you have and for your thoughtfulness in presenting me a beautiful color photograph of our Pope together with a John Paul II silver ingot. As one of our former employees, Jaye was one of the best. She enjoys God's blessings, and she certainly has earned mine.

• FRIENDS of former Essex County Republican Chairman John Renna are sponsoring a well-earned testimonial dinner in his honor Wednesday, September 11th, at the Mayfair Farms. Reservations are available at \$100 per person - a reasonable price in this day of \$250 and \$1,250 tickets.

• NEW JERSEY Senate President Donnie DiFrancesco has scheduled his Gala for Friday, September 27th, at the Meadowlands Pegasus Restaurant. Cocktails at 6:30, dinner seating at 8:00, donation \$1,250 per person. Proceeds will benefit the Senate President's Committee. For tickets to the event, one may call 908-560-0004.

• SEPTEMBER 12th is the date that GOP United States Senate candidate Dick Zimmer has scheduled a fundraiser at the Brunswick Hyatt in New Brunswick.

• IT seems as if more friends and people I know are dying currently than ever in the past. I just received notice that an old Florida friend of mine, Phil Cuoco, died in North Bay Village, Florida. He was a set designer with the Jackie Gleason Show, designing all of the "Honeymooners" sets. Phil was one of the top scenic designers in the country. His passing makes me poorer for having one friend less.

Events

Fairs, flea markets, rummage...

Festival of the Andes, 12 noon to 10 p.m. Aug. 17 and 12 noon to 8 p.m. Aug. 18, outdoors, Waterloo Village. Admission, adults: 1 day - \$10.2 days - \$18; seniors: 1 day - \$8; children (6-15): 1 day - \$6/2 days - \$10. Celebration of cultural heritage. For info, call 347-0900.

Flea market and craft show, 9 a.m. to 5 p.m. Aug. 24, outdoors, Sacred Heart Church, 683 Bloomfield Ave., Bloomfield, near Willie's Diner. 75 vendors. Sponsored by Sacred Heart Home & School.

23rd Annual Festival-in-the-Park, 10 a.m. to 5 p.m. Sept. 8, Memorial Park between Chestnut St. and Vreeland Ave., Nutley. Free admission. Rain date - Sept. 22. Benefits the Nutley Historical Society and the Kingsland Trust.

Family Festival, 6 p.m. to 10:30 p.m. Sept. 6, 2 p.m. to 10:30 p.m. Sept. 7, 2 p.m. to 9:30 p.m. Sept. 8. The Parish of St. Valentine, Hoover and E. Passaic Ave., Bloomfield. For info, call 743-4508.

Sacred Heart Parish Carnival, Sept. 13-15, 683 Bloomfield Ave., Bloomfield. For info, call 748-1800 or 893-9261.

"Twelfth Night", 2 p.m. and 6 p.m. Aug. 17, 2 p.m. Aug. 18, Verona Park bandstand. For info, call 601-0063.

Flea market and craft show, 9 a.m. to 5 p.m. Aug. 31, Frank Vincent Marina, Passaic Ave., Kearny. For info, call 997-9535.

Fundraisers...

St. Mary's lobby sales: Aug. 15: sterling silver jewelry; Aug. 30: sheets and linens. Sept. 4-8: trip to Wildwood Crest. For info, call Mary Bein at 470-3047; Sept. 24: day's outing to Brownstone House Italian-American Festival. For info, call 470-3047. Lobby sales 8:30 a.m. to 5 p.m., 211 Pennington Ave., Passaic.

3rd Annual Lobster Fest, Sept. 14, St. Paul's Church, Franklin Ave. (bet. High and Kingsland), Nutley. \$12.50. For reservations, call 667-4812. Seatings at 5 and 7 p.m.

Bus trip to Showboat, Atlantic City, Sept. 22. Bus leaves Italian American clubhouse, 642 Franklin Ave., Nutley, at 9 a.m. \$20 with \$15 coin return. For tickets, call Al Prosperi at 667-5146.

NOTICE TO ABSENT DEFENDANTS

(L.S.) STATE OF NEW JERSEY

THE FINANCIAL INC.

YOU ARE HEREBY SUMMONED AND

DEEMED TO HAVE BEEN SERVED UPON

FEDEMAN AND PHILLIPS, P.C., plaintiff's attorney

whose address is Suite 505, Senterly Office Plaza, 216 Haddon Avenue, Westmont, New Jersey 08108, an answer to the

Complaint filed in a civil action, in which

Countrywide Home Loans, Inc. is the plaintiff and

Anthony Robinson et al. are defendants, pending in the Superior Court of New Jersey, Chancery Division, Essex County and hearing

Docket No. F-7170-96 within thirty-five (35) days after August 15, 1996 exclusive of such date. If you fail to do so, judgment by default may be rendered against you for the relief demanded in the Complaint. You shall file your answer and proof of service in duplicate with the Clerk of the Superior Court of New Jersey, Hughes Justice Complex, CN 971, 24 Market Street, Trenton, New Jersey 08625, in accordance with the rules of civil practice and procedure.

This action has been instituted for the purpose of (1) foreclosing a mortgage dated July 22, 1991 made by Anthony Robinson and Thelma L. Walker as mortgagors given to Realty Mortgage Company, Inc. and recorded on July 23, 1991 in book 5952 of Mortgages for Essex County page 665; Said mortgage was assigned on July 22, 1991 to Countrywide Funding Corporation who is now known as Countrywide Home Loans, Inc., the plaintiff herein. Said assignment was recorded on July 23, 1991 in book 663 of Assignments of Mortgages for Essex County page 830; and (2) possession of, and concerns premises commonly known as 79 S. Clinton Street, East Orange, N.J. 07018.

If you are unable to obtain an attorney you may communicate with the New Jersey State Bar Association by calling 609-394-1101. You may also contact the Lawyer Referral Service of the County of venue by calling 201-522-1513.

Y. TMI Financial Inc. are named as a party defendant to this foreclosure action. Any lien, claim or interest you may have in, to or on the mortgaged premises by virtue of the following mortgage:

Mortgage made by Anthony Robinson, Thelma L. Walker and Stephanie Walker given to Empire Funding Corporation dated May 15, 1993 and recorded July 1, 1993 in book 623 at page 803 to secure \$13,000.00. Said mortgage was assigned on June 21, 1993 to TMI Financial Inc. Said assignment was recorded on July 1, 1992 in book 701 at page 519.

Donald F. Phelan, Clerk Superior Court of New Jersey

Belleville Times August 15, 1996 Fee: \$63.55 B96-439

SHERIFF'S FILE NO. 96-015412

SHERIFF'S SALE SUPERIOR COURT OF NEW JERSEY, CHANCERY DIVISION, ESSEX COUNTY, DOCKET NO. F1437975

VALLEY NATIONAL BANK, A NATIONAL BANKING ASSOCIATION, LAIN-TIFF vs. GERARD N. SEDICINO & FRANCES SEDICINO ET AL'S, DEFENDANTS, Execution For Sale of Mortgaged Premises.

By virtue of the above stated writ of Execution, to me directed, I shall expose for sale by Public Auction, in SHERIFF'S OFFICE, Essex County Courts Building in Newark, on Tuesday, September 10, 1996, at one-thirty P.M. (Prevaling Time)

Commonly known as: 00000073 BLOOMFIELD NUTLEY, NJ 07110

Lot: 21 Block: 283

Size: 30 x 195 feet

Distance to nearest cross street: 156.79 feet

Nearest cross street: STAGER PLACE

A full legal description can be found in the office of the Register of Essex County. A deposit of 20% of the bid price in certified funds is required at the time of sale. The approximate amount of the Judgment to be satisfied by said sale is the sum of FORTY THREE THOUSAND FIVE HUNDRED EIGHTY ONE AND 40/100 DOLLARS (\$43,581.60), together with the costs of this sale. The Sheriff reserves the right to adjourn the sale

from time to time as provided by Law.

Newark, N.J. August 5, 1996

ARMANDO B. FORTOURA, Sheriff

Sterna, Laventhal, Neorgard & Dady, Attorneys

Belleville Times August 15, 22, 29, September 5, 1996 Fee: \$82.72 B96-430

SHERIFF'S FILE NO. 96-014942

SHERIFF'S SALE SUPERIOR COURT OF NEW JERSEY, CHANCERY DIVISION, ESSEX COUNTY, DOCKET NO. F508095

FEDERAL NATIONAL MORTGAGE ASSOCIATION, PLAINTIFF vs. EFIONG O. ONUNUIE & DIANE P. ONUNUIE, HIS WIFE, ET AL'S, DEFENDANTS, Execution For Sale of Mortgaged Premises.

By virtue of the above stated writ of Execution, to me directed, I shall expose for sale by Public Auction, in SHERIFF'S OFFICE, Essex County Courts Building in Newark, on Tuesday, September 10, 1996, at one-thirty P.M. (Prevaling Time)

Commonly known as: 00000096 EASTERN PKWY. NEWARK, NJ 07111

Lot: 28 Block: 4140A

Size: 120 x 42.51 feet

Distance to nearest cross street: 562.51 feet

Nearest cross street: SANFORD PLACE

A full legal description can be found in the office of the Register of Essex County. A deposit of 20% of the bid price in certified funds is required at the time of sale. The approximate amount of the Judgment to be satisfied by said sale is the sum of ONE HUNDREY EIGHTY ONE THOUSAND NINE HUNDRED TWENTY NINE AND 49/100 DOLLARS (\$181,929.49), together with the costs of this sale. The Sheriff reserves the right to adjourn the sale from time to time as provided by Law.

Newark, N.J. August 5, 1996

ARMANDO B. FORTOURA, Sheriff

Sterna, Laventhal, Neorgard & Dady, Attorneys

Belleville Times August 15, 22, 29, September 5, 1996 Fee: \$86.48 B96-431

Missing classmates sought for B.H.S. reunion

There are 106 classmates from Belleville High School's class of 1966 that cannot be located. The 30th reunion will be held Saturday, Nov. 23 at Crystals in Lyndhurst. If anyone has any information pertaining to their whereabouts, please contact the committee: Class of 1966, P.O. Box 722, Nutley, N.J. 07110. The missing classmates are:

Linda Allbaugh, Carolyn Black Bacon, Barbara Bray Veltre, Susan Brisk, Weldon Barrett, Robert Boghione, Sue Borino Scherer, Delores Curcione, Roseanne DeFillippes, Phyllis DePalma, Rosemary DeBenedetto, JoAnn Delcorso Rice, Linda D'Innocenzo, James DeFillippes, Anthony DeRegatis, Richard Dougherty, George Dougherty, James Dougher, William Dudley, Richard Duffy, Robert Fersch, Joan Fasciani, Pauletter Fischer, Richard Fairchild, William Felty, Ellen Fischer Weiss, Albert Galvin, Donald Garzilli, Harry Ghezzi, Pasquale Grasso, David Grigonis, Maryann Giampietro Assantes, Laura Gublio, Carol Giardina Keough, Kathleen Haeckel, Cherylee Heitzman, Roberta Herter, Ann Hubs, George Inderweis, Diane James, Lucy Jannicelli, Angela Juliano, Beth

Kaminsky, Russell Kaufman, Francine Krouse, Jeffrey Lane, Diane Luzzo, Diane Macon, Donna Mallison, Joseph Marra, Barbara Masiero Anthony, Linda Marette, Marybeth May Moench, Delores Martin, Delores Miglionico, Migdalia Miranda, Diane Miller Sain, William McCarthy, Joseph McGuire, Carmen Montalbano, Frank Montarelli, William Napolietto, Joseph Neglia, Kathleen O'Toole Estel, Joseph Pagliolonga, James Passells, Anthony Parrillo, Robert Paterson, William Pekrol, Theresa Pepe, Vera Perry, Connie Petronaci, Richard Pucciarello, Charles Reed (Rock), Robert Robertson, Carrie Robinson, Caroline Rogers, James Rowland, Constance Sauchelli, Mary Savi, John Sansone, William Sagarese, John Santiago, Carmella Schepis, Sandford Share, Bruce Sincos, Frank Smickle, Georgina Smith, Curtis Smith, Kenneth Southern, Howard Squires, Claudine Teemer, Nicholas Transente, Marylou Ugnad, George Urchol, Meredith Vaagenses, Anthony Vastardis, Louis Visco, Daniel Waldron, William Walker, Linda Walsh, and Lillian Wilson.

Lifeline from Clara Maass provides emergency assistance

The number of Americans living into their 80s and 90s continues to grow, and for many — especially those confronted with chronic illnesses, disabilities and diminished eyesight and hearing — independence becomes a more difficult task.

Established in 1986, Lifeline is a community outreach service, under the auspices of Clara Maass Medical Center, designed to act as a personal emergency response system. Lifeline assists its members in regaining control of their lives and helps add a medium of

independence and dignity.

Lifeline serves a number of candidates who present a wide variety of special needs, which include the elderly, chronically ill, cancer patients (including hospice), wheelchair-bound, handicapped, the homebound, mothers of infants or children in crisis situations, and those of any age feeling physically or emotionally vulnerable by living alone.

For additional information on Lifeline, call Lifeline coordinator Carol Spiro at 450-2283.

SHARE NEW JERSEY offering holiday food packages

SHARE NEW JERSEY has begun its annual Holiday Food Package Campaign and is offering holiday food packages to church groups, charitable groups, civic organizations, private companies and fraternal organizations dedicated to creating hunger-free holidays this coming Thanksgiving and Christmas season.

Food packages may be bought in 25 unit blocks for \$350. The menu consists of turkey, trim-

mings, fresh vegetables, fruits, cornbread and much more!

The closing date for Thanksgiving orders is Thursday, Oct. 31. The closing date for Christmas orders is Tuesday, Dec. 3.

There is no limit on the number of packages each organization may purchase for holiday distribution.

For more information or to place an order, call Janette Carroll at 344-2400.



Bernadette Cerami of Belleville, Maria Ryan of Bloomfield and Susanne Furda of Bloomfield, front row, left to right, join Scott Miller, Tim Capabalo and Tim Wright, back row, left to right, in Theatre, Inc.'s production of Shakespeare's "Twelfth Night." Performances will be held Aug. 10, 11, 17 and 18 on the bandstand in Verona Park. Admission is free.

'Twelfth Night' performances slated

The Essex County Department of Parks and Recreation has announced that Theatre, Inc. will return to Verona Park for their 1996 Shakespeare in the Park production of "Twelfth Night." The performances will take place on Aug. 10 and 17 at 2 p.m. and 6 p.m. and Aug. 11 and 18 at 2 p.m.

This fanciful farce filled with mistaken identity, forbidden love and laughter at every turn features Tim Capabalo of Little Falls as "Feste" the jester, Maria Ryan of Bloomfield as "Viola," Susanne Furda of Bloomfield as "Olivia," Scott Miller of Weekawake as "Malvolio," Kevin Saurette of Weekawake as Sir Toby Belch,

Bernadette Cerami of Belleville as "Maria," Sean Robinson of Monclair as "Fabian," Rob Utlich of Manhattan as "Sir Andrew Aguecheek" and Tim Wright of Wayne as the Duke "Orsino."

All performances will take place outdoors on the bandstand in Verona Park. Patrons are encouraged to bring blankets and/or lawn chairs. Admission is free.

Theatre, Inc. is a recipient of a 1996 Essex County Appreciation Award for outstanding contribution to the community for their 1995 Shakespeare in the Park production of "The Tempest."

For more information, call 601-0053.

Mental health group gets state review

The Bureau of Licensing of the State of New Jersey, along with the New Jersey Division of Mental Health Services, has reviewed the programs and services offered by Community Mental Health Services, 570 Belleville Ave., Belleville.

Called a "site review," the process recently involved eight reviewers under the leadership of

Alan Cerny, who spent three days at the agency interviewing staff, clients, and family members. In addition, the review process seeks appraisals from other agencies, referring sources and from the Essex County mental health administrator.

A written report will be submitted to the agency within several weeks.

Our Gift to You and Your Family!



SPECIAL OFFER!

\$30* OFF

Complete Pair of Eyeglasses!

* Applies to 2nd pair with same insurance plan. Expires 9/2/96

Dr. Walter Shurminsky Jr.
Optometrist

MAKE AN APPOINTMENT TODAY!

420 Centre Street Nutley • 201-667-0331

DERMATOLOGY FOR ALL DISORDERS

Cheryl Ackerman, M.D.

Board Certified Dermatologist

announces
the opening of her office

**5 Franklin Ave.
Suite 609
Belleville**

Most insurance plans accepted.

**Call for Appointments
201-759-3005**

Scardigno's

PRODUCE

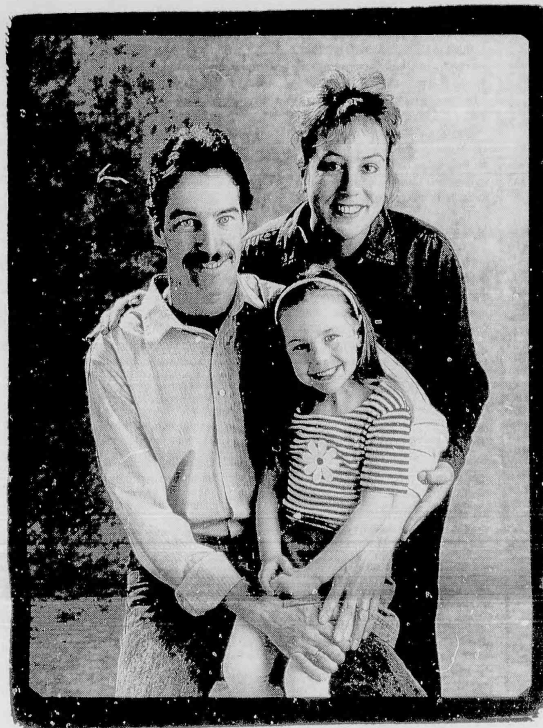
917 Franklin Ave.
Newark, NJ 07102
201-485-2900
Fax: 201-485-2979

Iceberg Lettuce 2 for \$1.00	Escarole 3 lbs. \$1.00	Eggplant 2 lbs. \$1.00
Cantaloupes 59¢ each	Chiquita Bananas 3 lbs. \$1.00	Extra Large Nectarines 2 lbs. \$1.00
Green Bell Peppers 3 lbs. \$1.00	Finlandia Imported Swiss Cheese \$2.69 lb.	5 lbs. Idaho Potatoes 99¢ a bag
Extra Large Jersey Peaches 59¢ lb.	Farm Fresh Produce	Thumann's Jersey-Made Ham \$2.99 lb.
Extra Large Pugliese Eggs 79¢ a dozen	<p>We do breakfast right!</p> <p>WE CATER HOT & COLD BUFFET Corp. Accounts Welcome Come in and see our menu & pricing!</p> <p>FAX US YOUR LUNCH ORDER AND WE'LL DELIVER</p> <p><small>Business Hours Mon. - Sat. 7 a.m. - 5 p.m. Sun. - Tues. 10 a.m. - 4 p.m.</small></p> <p>Look For Our Daily Specials Each Week "Family First Card Welcome"</p> <p>- FREE DELIVERY -</p>	

Come in for lunch and dine in our outside cafe

We now accept Discover, Visa, MasterCard and American Express

WE THOUGHT WE'D HAVE TO GO TO A BIG HOSPITAL TO GET THE BEST CANCER CARE.



*Timothy Kidd,
stem cell
transplant
patient, with
his wife and
daughter.*

THEN WE HEARD ABOUT BAYONNE.

You may not have known it, but at Bayonne Hospital we have the same comprehensive cancer care that you would receive at many major medical centers - only with something extra - a personal touch. You see, we're smaller. So you won't be treated like a number or get lost in the system here.

Our Cancer Program is accredited by the American College of Surgeons. So, not only is our 40-bed medical/surgical unit dedicated to the care of oncology patients, but our specially-trained oncology staff and physicians also practice the latest and most effective oncology techniques such as stem cell transplant and radioimplants for prostate cancer patients.

Also, many of our nurses are trained and certified to administer a full range of chemotherapy medications.

But we don't stop there. Our advanced equipment includes the Siemens Mevatron Linear Accelerator as well as a Nucletron Microselection HDR, which is the gold standard in brachytherapy treatment and planning. Along with a modern, computerized and accredited laboratory that provides effective and timely results of tests. And our Tumor Board and Tumor Registry which studies, tracks and evaluate cases.

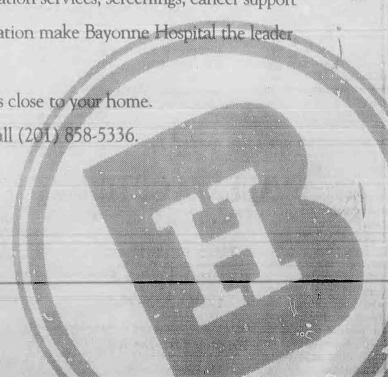
All of this, coupled with our many community programs such as pain management, rehabilitation services, screenings, cancer support groups and preventive education make Bayonne Hospital the leader in oncology treatment.

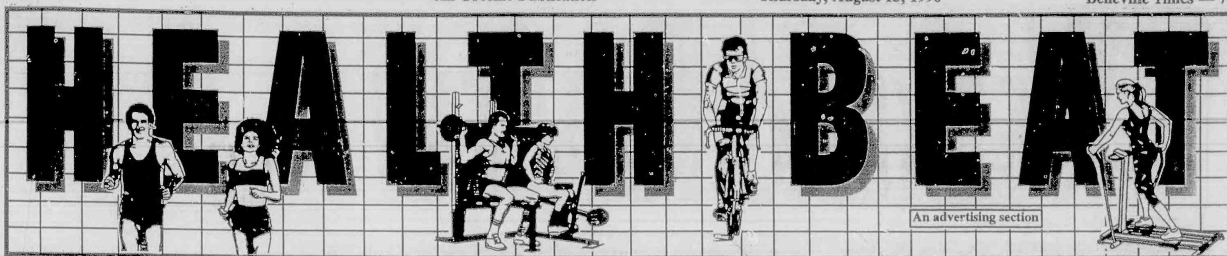
And the best thing is, it's close to your home.

For more information, call (201) 858-5336.

Bayonne Hospital.
Yes, Bayonne.

AVENUE E AT 29TH STREET, BAYONNE, NJ 07002





Nutrition On-line

By Michael A. DeAngelis

A feature of The Nutley Sun, Belleville Times, Bloomfield Life and Glen Ridge Voice

What is white, nutritious and is referred to by children as "moo juice?" The answer is milk!

It is recommended that we consume 2-3 servings of milk or dairy products per day. However, most people do not meet this recommendation.

But, those who consume at least one glass a day of milk or one serving a day of a dairy product would be well advised to think twice about the amount of fat they are receiving from their dairy choices.

There are differing amounts of fat in milk ranging from the ever popular whole milk to 2%, 1%, and skim varieties. What is the difference and what does it mean to the average person?

Whole milk contains 8.2 grams of fat in one 8 ounce glass of milk. This is compared to the 0 grams of fat in the same amount of skim milk.

With the increased amount of fat in whole milk comes many more calories. Whole milk has 70 more calories per glass than

skim (nonfat) milk.

The number of calories from whole milk can mount to as much as 1377 kcal per week more than skim milk if 8 ounces of whole milk is consumed three times a day for a whole week.

For someone who is trying to loose weight, changing from whole milk to skim milk can make a great impact. Also, reducing the fat content of dairy products is a heart healthy choice.

If you desire to change to a lower fat milk, start out gradually reducing from whole milk to 2% (4.7g fat, 121 kcal per cup) then to 1% (2.4g fat, 104 kcal per cup) and finally skim. This reduction can be spread out across three weeks or as tolerated.

Furthermore, the Vitamin A, D, calcium, phosphorus, B-6, and B-12 content does not change with the fat content.

Try reducing the fat in your milk choices and keep your bones and your whole body healthy!

Residency program graduates feted by Mountainside Hospital

Mountainside Hospital in Glen Ridge recently hosted its annual house staff graduation and dinner dance for graduates of the hospital's residency training programs in family practice, internal medicine and general dentistry.

Approximately 200 people attended the celebration at the Glen Ridge Country Club.

Dr. Joseph Barbalinardo, M.D., chair of the Medical Staff Education Committee, served as master of ceremonies. Congratulatory remarks were delivered by Robert Silver, senior vice president and general manager, and Dr. George Saj, M.D., president of the medical staff.

Silver commented on the evolving role of physicians and dentists in a climate of profound change in health care. He encouraged the graduates to have the conviction to be a catalyst for positive change and to confront the challenges ahead with a true passion for human life and for medicine.

The Class of 1996 includes 10 graduates from the internal medicine residency program, six graduated from the family practice residency program, and four graduates from the general dentistry residency program. Diplomas were presented by the residency program directors: Dr. Alan Matook, M.D.,

internal medicine; Dr. Sefin Anthony, M.D., family practice; and Dr. William Burns, D.M.D., general dentistry.

The Residents' Award, a distinguished honor bestowed upon an individual demonstrating outstanding commitment to the Internal Medicine Residency Program, was presented by the Internal Medicine residents to Dr. Ruth Wong-Liang, M.D., associate program director. Residents from the general dentistry and family practice residency programs presented Humanitarian Awards to Joseph Laraja of the Laraja Foundation, a major benefactor of the hospital's dental clinic, and Dr. William Indruk, M.D.

Mountainside Hospital's three residency training programs are concentrated in primary care fields. The family practice and internal medicine residency programs are three-year programs, while the dental residency program - the oldest residency at Mountainside and one of the first dental residencies established in the United States - is a one-year program.

Along with Morristown Memorial and Overlook Hospitals, Mountainside Hospital is a part of the Atlantic Health Care System, one of the largest hospital systems in the state.

Hospice of New Jersey to train new volunteers

Hospice of New Jersey, a Bloomfield-based organization dedicated to providing care and supportive services to terminally ill individuals, is now recruiting volunteers.

Volunteers are needed to visit patients in their own homes, in nursing homes and in in-patient hospital facilities.

What is volunteerism? In the broadest sense of the meaning, volunteerism is: Working in some way or giving of your time to help others for no monetary reward. This can be accomplished through an organization such as Hospice of New Jersey.

Hospice volunteers not only care, but offer loving care to their

patients and family members. By the time hospice comes into a patient's home, the patient and

family are stressed, tired, anxious and fearful.

The hospice staff and volunteers come in to offer support, give respite, hold hands and listen. Hospice offers emotional, physical, psychological and spiritual support.

Hospice of New Jersey volunteers are truly people who care.

Both daytime and evening training sessions will begin in September at Hospice of New Jersey offices, located at 400 Broadacres Drive, fourth floor, Bloomfield.

The training consists of eight sessions, held once a week for 2 1/2 hours each.

Please call Joan De Jean, volunteer coordinator of hospice of New Jersey, at 893-0818 for further information or to register for the training.

PLASTIC & RECONSTRUCTIVE SURGERY

Perry Charles Ritota, M.D.

Hours by Appointment
Evening & Weekend Hours Available

- Face Lifts
- Chemical Peels
- Hair Transplantation
- Breast Reduction
- Tummy Tucks
- Liposuction
- Breast Augmentation
- Eyelid Surgery

25 Prospect Avenue, Hackensack
(201) 342-7333
315 Northfield Road, Livingston
(201) 994-3200

VACATION STAY PROGRAM A NEW AND MUCH NEEDED SERVICE

If you are planning a summer vacation and are concerned about who will care for your elderly loved one, we have the perfect solution.

Our Vacation stay plans, tailored to your individual needs, include room & board, nutritious meals and snacks and 24 hour nursing supervision, all at very special rates.

Go ahead and have a worry free trip while your loved one enjoys their own special vacation.



For more information on vacation stays and rates, please contact the Admissions coordinator at:

743-7772

PARK MANOR NURSING HOME
23 Park Place
Bloomfield, NJ 07003

Advanced Practice Center now open

The Advance Practice Center recently opened at 673 Bloomfield Avenue in Bloomfield. It is the first health care office in the area to offer health care for women, exclusively by women.

Office hours are geared towards the working woman, and the fees are reasonable. The office itself is feminine and attractive, and convenient to public transportation.

Questions and patient involvement is encouraged in their plan of care.

Services offered include breast and pelvic exams, contraceptive management, help for general gynecology problems, and walk-in pregnancy tests.

As a new office, there is no wait for appointments. Call 429-0011 today.

HEALTH CARE FOR WOMEN BY WOMEN

- Basic History & Physical
- Breast Exams
- Pelvic Exams
- Walk-In Pregnancy Tests
- Friendly & Feminine Office
- Affordable Health Care
- General Gynecology Problems
- Contraceptive Management

Open and comfortable woman to woman communication.
Convenient evening hours for the working woman.

THE ADVANCED PRACTICE CENTER
429-0011

673 Bloomfield Ave. Bloomfield



Have A Good Checkup!

Having your teeth checked can be a good experience, when a gentle, experienced professional takes care of you.

WE MAKE BEAUTIFUL SMILES HAPPEN

- Regular Checkups • Strict Sterilization
- All Phases of Cosmetic & Preventive Dentistry

Dr. Elaine S. Tremarco

General, Family & Cosmetic Dentistry

Saturday, Evening & Emergency Appointments

145 Vreeland Ave. • Nutley
667-1332

POD
Preventive Dental
Organization



SEVEN
STAR
DENTAL
S.C.B.S.

American Heart
Association
Fighting Heart Diseases
and Stroke



Medical miracles
start with research

Work It Out!

Our new address is...

VALENZA OPTICIANS
of Newark

1025 Broad Street
Bloomfield, NJ 07003
(201) 338-5620

Mark & Lisa DeGiacomo

Making a Difference
in a Heartbeat

If you think you're having a heart attack, every second counts. Don't let confusion, uncertainty or embarrassment keep you from seeking medical attention fast.

In Mountainside Hospital's new Chest Pain Center, every potential heart attack victim is immediately evaluated by on-call cardiac care specialists. During this first, critical hour, our emergency physicians, chest X-ray technicians, EKG technicians, and other staff work together to further evaluate the heart muscle and determine the best treatment plan.

THE Chest Pain Center
(LOCATED IN THE EMERGENCY DEPT.)

At the first signs of tightness, pressure, chest pain or even mild chest discomfort, don't wait. Call 911 immediately.

It can make the difference between being wrong, and being dead wrong.

For a free brochure about our Chest Pain Center or the name of a Mountainside physician, call 1-800-MD-SEARCH (1-800-437-3272).

Mountainside Hospital

WEEKEND REVIEW

an advertising section

Arts... Dining... Entertainment...

A weekly feature of
The Nutley Sun, Belleville Times,
Bloomfield Life, Glen Ridge Voice

ON THE AISLE

with Richard

MOVIE TRIVIA CONTEST

Win two FREE movie passes from one of our participating theatres.

Contest Rules:
Completed entries with all 5 correctly-answered trivia questions must be received by 12 noon, Monday.
The winner will be selected in a random drawing amongst eligible entries.
Odds of winning will be determined by the number of eligible entries received.
All entries will become the property of Orechio Publications.
In the event that no one correctly answers all 5 trivia questions, winner will be determined in a random drawing of entries with the most correct answers.
Winner's name and correct answers will be published in next week's edition.

Movie Trivia Contest #14 August 15, 1996

- "Forrest Gump," "Absence of Malice," "Mrs. Doubtfire."
- After making a "Great Escape," he fell for "Victor, Victoria."
- Was it really a "Turning Point" for Mrs. Robinson?
- "Money Train," "Natural Born Killers," "White Men Can't Jump"
- This "Easy Rider" might have worn "Blue Velvet" while "bombing buses."

NAME _____
ADDRESS _____
PHONE # _____

Mail this completed entry to Orechio Publications, 800 Bloomfield Ave., Nutley, NJ 07110 att: Movie Trivia Contest

Answers to last week's quiz:
1. Rosie O'Donnell
2. Shaquille O'Neal
3. George Lucas
4. Ray Milland
5. Frank Langella
Winner of two free passes to Bellevue Theatre: June Ierubino of Nutley

MOVIE TIMETABLE

Please Note: Movie times are subject to unexpected changes. Call on the day of the show to confirm times.

BELLEVUE

Bellevue Ave. Upper Montclair
(201) 744-1455

ALASKA - Fri-Sun: 1:30, 4:00, 7:00, 9:30 Mon-Thurs: 1:30, 4:00, 7:00, 9:15
COURAGE UNDER FIRE - Fri-Sun: 1:45, 4:15, 7:15, 9:45 Mon-Thurs: 1:45, 4:15, 7:15, 9:30
THE FAN - Fri-Sun: 2:00, 4:30, 7:30, 10:00 Mon-Thurs: 2:00, 4:30, 7:30, 9:45

CINEMA 23 FIVEPLEX

101 Pompton Ave. Cedar Grove
(201) 857-0877

TIN CUP - Fri-Sun: 1:20, 4:20, 7:20, 9:55 Mon-Thurs: 1:20, 7:20, 9:45
JACK - Fri-Sun: 12:30, 2:40, 4:45, 7:35, 9:45 Mon-Thurs: 1:00, 7:35, 9:40
ESCAPE FROM L.A. - Fri-Sun: 12:45, 2:55, 5:05, 7:45, 10:00 Mon-Thurs: 1:15, 7:45, 9:50
A TIME TO KILL - Fri-Sun: 1:15, 4:10, 7:10, 9:45 Mon-Thurs: 1:15, 7:10, 9:40
INDEPENDENCE DAY - Fri-Sun: 1:20, 4:15, 7:15, 9:55 Mon-Thurs: 1:20, 7:15, 9:45

CLAIRIDGE TRIPLE CINEMA

486 Bloomfield Ave. Montclair
(201) 746-5564

EWMA - Fri-Thurs: 12:30, 2:45, 5:00, 7:15, 9:30
KANSAS CITY - Fri-Thurs: 12:40, 2:50, 5:05, 7:20, 9:35
MA SAISON PREFERENCE - Fri-Thurs: 12:45, 3:00, 5:10, 7:25, 9:30

ESSEX GREEN CINEMA

Prospect Ave. West Orange
(201) 731-6692

A TIME TO KILL - Fri-Sun: 1:00, 4:00, 7:00, 10:00 Mon-Thurs: 1:00, 4:00, 7:00, 9:50
ESCAPE FROM L.A. - Fri-Thurs: 1:30, 4:30, 7:30, 9:40
INDEPENDENCE DAY - Fri-Sun: 1:15, 4:15, 7:15, 10:15 Mon-Thurs: 1:15, 4:15, 4:15, 10:00

LINCOLN CINEMAS

838 Kearny Ave. Arlington
(201) 997-6873

PLEASE CALL FOR SHOW TIMES

JACK • ALASKA • ESCAPE FROM L.A. • MATILDA • BORDELLO OF BLOOD • THE FAN • HOUSE ARREST

ROYAL TWIN THEATRE

614 Bloomfield Ave. Bloomfield
(201) 748-3555

PLEASE CALL FOR SHOW TIMES

THE FAN • ESCAPE FROM L.A.

Roberts WELLMONT THEATRES

5 Seymour St. Montclair
(201) 783-9500

HOUSE ARREST - Fri-Sun: 1:20, 3:30, 5:20, 7:20, 9:20 Mon-Thurs: 1:30, 7:20, 9:20
THE HUNCHBACK OF NOTRE DAME - Fri-Sun: 12:50 Mon-Thurs: 1:15
MA SAISON PREFERENCE - Fri-Sun: 2:45, 5:00, 7:15 Mon-Thurs: 7:15
PURPLE NOON - Fri-Thurs: 9:25
MATILDA - Fri-Sun: 12:30, 2:15, 4:00, 5:45, 7:30 Mon-Thurs: 1:45, 7:30
LOVE STAR - Fri-Thurs: 9:15

HOROSCOPES

August 18-24

ARIES - March 21/April 20
It's time to stop wallowing in self-pity. Aries. Things are not as bad as they may seem. A Leo friend helps you unload on Wednesday. Be careful not to reveal too much. Exercise helps get anxiety out towards the end of the week. Watch your spending on a shopping excursion over the weekend.

TAURUS - April 21/May 21
Don't let your stubborn side get the best of you this week. It's time for common sense to prevail. Take a long lunch at work on Wednesday if it means keeping your temper in check. Dress sharp to the office on Friday and a Capricorn will notice. A social celebration helps lighten your mood.

GEMINI - May 22/June 21
Exercise, exercise, exercise, Gemini. This week will wear you down without it. Friends and colleagues call on you from all angles — be prepared. A Virgo comes to you for career advice on Wednesday. Share the benefits of your experience. Make plans to see old friends Thursday.

CANCER - June 22/July 22
Take a chance on a blind date. Don't jump the gun in judgment; there's more there than meets the eye. Tolerance is called upon by a female Aquarius on Monday. Listen before you offer advice. Need something to look forward to? Start plans rolling for a tropical vacation.

LEO - July 23/August 23
Stop settling! You seem to be caught up in things that make others happy, while putting your own interests on hold. Romance is a concern this week. Does the word humdrum ring any bells? Use your sensitivity, charm and the lion's courage to change your situation. Honesty equals power.

VIRGO - Aug 24/Sept 22
Things could seem crazy at home and you might have to put your own needs on the back burner for a while. Prepare for an athletic competition over the weekend — don't neglect sleep. Watch your diet, especially on Friday. Too much junk food and caffeine will take its toll.

LIBRA - Sept 23/Oct 23
Sick of the same old routine? Take a mental-health day from work on Tuesday and visit a favorite bookstore. Good news comes your way on Thursday. Romance is tricky this week. Search further than words for the truth. A Scorpio is holding back on you. Your financial situation calls for a reality check.

SCORPIO - Oct 24/Nov 22
Don't jump into relationships without thinking. Passion mixed with stubbornness can lead to foolhardy decisions in love. Visit a distant family member this week. Bring a date. Maybe the Libra who's been catching your eye at work? Go for it. Dress to kill on Tuesday. Take time out this weekend to catch up on letter writing and buy some greeting cards, or better yet, make your own. Relaxation is key at home. If you're planning a special event, remember to schedule some breaks.

AQUARIUS - Jan 21/Feb 18
Protect your sanity this week. A heavy workload requires that you schedule your time carefully. Thinking about pulling an all-nighter? Think again. Sleep will help keep you smiling and keep your patience running. It's time to get rid of belongings that do nothing but eat up space.

PISCES - Feb 19/March 20
A week with ups and downs. Don't let a sour mood ruin a good time. Pay close attention to a loved one's needs. A special date puts a smile on your face Friday. Dress to thrill. Leave this weekend open for impulsive plans. Try to spend more quality time with family.

FAMOUS BIRTHDAYS

AUGUST 18
Robert Redford, Actor

AUGUST 19
Wilho Shoomaker, Jockey

AUGUST 20
Robert Plant, Musician

AUGUST 21
"Count" Basie, Bandleader

AUGUST 22
Dorothy Parker, Critic/Writer

AUGUST 23
Gene Kelly, Dancer/Singer

AUGUST 24
Egon Madsen, Dancer

FOR ENTERTAINMENT PURPOSES ONLY

HarvestFest committee seeks classic cars, trucks for parade

The fourth annual Bloomfield HarvestFest, to be held in September, is looking for owners of classic cars and trucks to participate in an antique car show and parade.

Cars at least 20 years old are being sought; trucks can be newer. The show's goal is to have more than 100 vehicles attending the weekend festivities and participating in the parade, set for noon on Sept. 21. Prizes will be awarded to the best vehicles in several categories, and a hospitality area with free refreshments for volunteers is planned.

The parade committee is also seeking 25 merchants willing to donate trophies to be awarded to the winning car or truck of their choice. The trophy would be engraved with the merchants' name on it, and the donor would be the sole judge of the competition for that trophy. Trophies will cost merchants about \$16 each, and the money must be received by the committee no later than Sunday, Sept. 4.

Bloomfield HarvestFest is a two-day street festival featuring entertainment, children's rides, educational booths, food and special events. Those interested in entering their cars in the parade or in donating trophies can call the parade office at 429-2557.

St. Valentine's family festival set for Sept. 6 through Sept. 8

St. Valentine's Parish, 125 North Spring St., Bloomfield, will hold its annual family festival Friday, Sept. 6, through Sunday, Sept. 8.

The fest will feature rides, wheels, games, ethnic foods and a 50/50, plus a super 50/50 at the closing on Sunday.

Hours of the fair are 6 p.m. to 10:30 p.m. on Sept. 6, 2 p.m. to 10:30 p.m. on Sept. 7 and 2 p.m. to 9:30 p.m. on Sept. 8. Parking will be available at nearby Franklin School on Curtis Street.

St. Valentine's is located near the intersection of Hoover and East Passaic avenues.

ONLY AT THE WELLMONT

BIRTHDAY PARTY PLUS

HOME OF THE 1,000 sq. ft. Super Screen

GROUP RATES

PURPLE NOON • HUNCHBACK OF NOTRE DAME • HOUSE ARREST
MATILDA • MA SAISON PREFERENCE • LONE STAR

Roberta Wellmont Theatres 5 Seymour Street, Montclair, (201) 783-9500

LINCOLN CINEMAS

838 Kearny Ave. • Kearny
(In The Arlington Section)
201-997-6873

\$3.50 ALL SEATS - DAILY MATINEE

2 FOR 1 TUESDAY EVENINGS
(Buy 1 Ticket & the 2nd is FREE)

OBC TV

TCI of Northern NJ Channel 20

MONDAY
4:30pm Jersey Music & Video Spotlight*
5:00pm Uncle Floyd's New Jersey*
5:30pm Ambassadors of Grace
6:00pm The Gary Null Show
7:00pm Conversations With Kate*
7:30pm The Metaphysical Messenger*
8:00pm Keys To Peace*
8:30pm NATV

TUESDAY
4:30pm Essex Digest
5:00pm Hot Spots With Daisy*
5:30pm For The Love of Beer*
6:00pm Film Filx & Video Pix*
6:30pm Jersey Music & Video Spotlight*
7:00pm Special Program
7:30pm It's In The Stars*
8:30pm NATV

WEDNESDAY
4:00pm Bringing Italy To You
5:00pm The Mark Dacey Show*
5:30pm Video Fashion Weekly
6:00pm Community Promos
6:30pm Hot Spots With Daisy*
7:00pm Conversations With Kate*
7:30pm The Metaphysical Messenger*
8:00pm Tomas Tonight*
8:30pm NATV

THURSDAY
4:30pm Jersey Music & Video Spotlight*
5:00pm Uncle Floyd's New Jersey*
5:30pm Real Estate & Car Connection
6:00pm Health Issues*
6:30pm Hot Spots With Daisy*
7:00pm The Mark Dacey Show*
7:30pm For The Love Of Beer*
8:00pm Tomas Tonight*
8:30pm NATV

FRIDAY
12:00pm NATV
5:00pm It's In The Stars (R)*
6:00pm The Gary Null Show
7:00pm Conversations With Kate*
7:30pm The Metaphysical Messenger*
8:00pm Keys To Peace*
8:30pm NATV

*SHOWS PRODUCED BY OBC TV

SUNDAY
8:00am Special Program
8:30am Film Filx & Video Pix*
9:00am Ambassador of Grace Ministry*
10:00am Special Program
10:30am Conversations With Kate*
11:00am The Metaphysical Messenger*
11:30am Health Issues*
12:00pm Keys To Peace*
12:30pm Italica
1:00pm Political Point*
1:30pm Special Program
2:00pm Special Program
2:30pm Special Program
3:00pm For The Love Of Beer*
3:30pm VideoFashion Weekly
4:00pm Special Program
4:30pm World Beat Network
5:00pm Bringing Italy To You*
6:00pm Carol & Carol Psychic Call In Show*
6:30pm Film Filx & Video Pix*
7:00pm The Mark Dacey Show*
7:30pm Real Estate & Car Connection
8:00pm Mondo Italiano
9:00pm Bringing Italy To You*
10:00pm Special Program
10:30pm Jersey Music & Video Spotlight*
11:00pm It's In The Stars (R)*

Comcast Cablevision Channel 36

525 Riverside Ave., Lyndhurst, NJ • (201) 430-0048
Leading 24 hr. Over • Gentlemen 25 & Over • Proper Attire Requested

For OBC TV Advertising Rate & Other Information
Call Men For Men
667-2700

Crystals

Insists You Do Experience The Elegance Of
New York's Only
25+ Older Club

**Every Wednesday
BIG BAND NIGHT**
with
THE ALAN QUINN ORCHESTRA
DJ SALBOY
General Admission is FREE!
Dinner Buffet & Balloon Dancing
Only \$10.95*
*Plus Tax & Gratuity

**Every Friday
CHAMPAGNE & ROSES NIGHT
FOR THE LADIES**
A Ross For Each Lady
11 Midnight
\$pm-10pm
75c DRINK
PROMOTION
(House Serves & Champagne)

525 Riverside Ave., Lyndhurst, NJ • (201) 430-0048
Leading 24 hr. Over • Gentlemen 25 & Over • Proper Attire Requested

Belleville SPORTS

BUC SHOTS

By Mike Lamberti



Buc football schedule should be challenging in '96

Yes, football season is quickly approaching. My Philadelphia Eagles are half way through the pre season schedule. The NFL season opens on Sunday, September 1 (I have to get my DirecTV hooked up by opening day, so I don't have to deal with the Jets and Giants, only, on a continuous basis).

Locally, the high school football season is not too far off. Coaches are allowed to work with their players after August 1 on a non-contact basis. Teams can begin official drills in late August.

At Belleville High School, the first game of the '96 season is just six weeks away, believe it or not. The Bucs will open the campaign on Saturday afternoon, September 21, when the team ventures to Scotch Plains.

As far as I can tell, it's the first time the Bucs will play Scotch Plains, a Union County school. For that matter, it's been a long time since Belleville played a team from Union County. You have to go back to November of 1984, when Belleville played Union in the Group IV, Section II playoffs.

This week, we'll run down the Buccaneers schedule, as head coach John Senesky begins his 20th season as head football coach at Belleville High School.

Most fans know that the '95 team struggled, going winless in nine games. The team did play competitively in four contests, but couldn't find the right combination to hit the win column.

Anyway, the Bucs open the season on the 21st of September, then continue the campaign on September 27, at Paramus.

The Bucs and Paramus have had a good rivalry since 1986. Paramus broke a losing streak to Belleville last year, beating the Bucs 20-0. Prior to that, Belleville had won five straight games, from '90-'94. Belleville holds the lead in the series, 7-3.

In week three, the Bucs return home to face Teaneck, beginning 7 p.m. on Friday, October 4. It's been a hard fought series between the Bucs and Highwaymen over the years. Last year, the two met in the season opener and Belleville lost a heartbreaker, 20-14. It was a game the Bucs should have won, but a controversial call from the officials turned the tide in the fourth quarter.

In the series, which began in 1983 (but wasn't contested from '84-'87), Teaneck holds a 5-4 lead. The Highwaymen have won the last two games.

Week four finds Belleville home to Paramus Catholic on Friday, October 11. Kickoff time is set for 7 p.m.

The Bucs and Paladins have had some shootouts over the years. The series between the two teams began on a rainy night in 1988. P.C. won that game, 10-0, but Belleville came back to win in '89 and '90. P.C. won the '91 and '92 games, but the Bucs used an offensive explosion to dominate the '93 game, thanks to some great passing by Mike Mundy. P.C. has won the past two years.

In last years game, the Paladins rallied from 19-7 down in the fourth quarter to win, 20-19. P.C. leads the series, 5-3.

The Bucs are on the road in week five, playing usually powerful St. Joe's of Montvale in a 1 p.m. kickoff on Saturday, October 19.

It hasn't been the best of times for Belleville in this series. The Bucs lone victory came in 1983, 30-6. Since then, St. Joe's has dominated, winning the past six games (from 1990-'95), most in a convincing manner. The closest Belleville came to a win was in 1992, when St. Joe's rallied for a 16-10 victory. The teams did not play each other from '84-'89.

After traveling to St. Joe's, the Bucs return home to play the juggernaut from Hackensack on Friday night, October 25 at 7 p.m.

The Comets have won the past four Group IV, Section I championships and have dominated Belleville since 1988. Belleville's lone win in this series came in '83. Hackensack has won the past eight games, from '88 through last year. The '94 game was one of the better ones in this rivalry. Hackensack, who was undefeated, had to rally in the fourth quarter to win, 28-21.

The Bucs will get a "bye" week the first week of November and don't play until Saturday, November 9, when the team travels to Paterson Eastside for a 1 p.m. start.

This has been a long time rivalry that has recently been quieted because of scheduling. Eastside, a member of the NJIHL Atlantic Division, is Belleville's cross-over game. The Bucs and Ghosts played from 1982-'87 and again in '89. During that tenure, Belleville held a 6-2 advantage in the series, with Eastside winning the last two games in '87 and '89.

The next-to-last game of the season is set for Friday, November 15. The Bucs travel to Don Bosco for a 7 p.m. kickoff. Belleville has had good success with D.B. throughout the years. The teams began the series in 1984. Entering this season, Belleville holds a 7-3 lead in the series. Last year, the Bucs lost a 7-6 decision at Don Bosco.

The season finale, of course, is set for Thanksgiving Day, November 28, when Nutley comes to town. The Bucs lost last year to the Raiders, 34-0. Belleville's last win in this series was in 1990, 21-6 at Belleville High School.

Since then, Nutley posted wins in '91, '94 and last year. The teams played to ties in '92 and '93. Nutley, over the past ten seasons, leads the series, 6-2-2. During Senesky's first 19 years, Nutley holds a slight lead in the series, 9-8-2.

We'll, of course, run the schedules for all the fall sports in a few weeks once the school year commences the first week in September. In the mean time, we'll begin coverage of the Buc football team in summer drills probably next week.

NFL Season

My annual NFL predictions will appear in the August 30 issue, prior to the season opener September 1. Last year, I picked Oakland and Dallas in the Super Bowl, with Oakland winning.

Let's hope I do a little better this time around.

One thing is for sure, my Eagles will make a serious run at the Super Bowl in 1996!

Belleville swimmers make splash in annual Blue/White meet at LeTerrace Club

By Tina Cervasio

Nestled between the parks and homes of Nutley, quietly sits LeTerrace Swim Club. Clad in its blue and white umbrellas, LeTerrace Swim Club is a private pool available to residents in surrounding towns.

Last Saturday might have been a cloudy, muggy day, but it was an exciting one for the LeTerrace Swim Team.

Twice a year, the LeTerrace Swim Team, under the direction of coach Brian Miller, holds its intersquad Blue/White meet.

"The meet is fun and informal for the kids where they don't have to compete with the 'take it for the team' attitude," said Miller.

Miller has coached the local swim team for three years. The swimmers' families are members of LeTerrace Club and are mostly residents in Nutley, Belleville, Bloomfield and Clifton.

The swim team competes weekly against other local swim clubs including Glen Ridge Country Club, Montclair Beach Club, and Bradford Bath and Tennis Club.

"This year, our swim team has brought home more first place ribbons than any other year," boasts Miller.

The team practices every morning at the pool. Miller says their practices focus on endurance and strength techniques for racing. He has the young athletes perform special drills to produce good turns, sharp starts and strong finishes.

Let's Saturday, the home pool competition was conducted like any other meet. The swimmers were randomly placed on the Blue or White team. The width of the pool was divided into six lanes, giving one lap races a 12 1/2 meter sprint and two laps a 25 meter swim.

In the freestyle events, in the 7-and-under division, Emily Schaffer of Bloomfield took first place.



Photos by Tina Cervasio

LeTERRACE CLUB SWIM TEAM. Top row (l-r): Stephanie Campione, Melissa Keelen, Carla Franciose, Tracey Keelen, Tara Signorelli, Arielle Lane. Next row (l-r): Kristen Pascal, Natalie Pascal, Heidi Klueful, Justine Grossman, Maria Campione, Brian Keelen. Next row (l-r): Cindy Moreno, Coach Brian Miller, Cherylanne Piegaro, Jason O'Connor, James Judge, Tim Rivers. Next row (l-r): Carmine Campione, Brian Jones, Chris Judge, Nick Campione, Emily Schaffer, Mike Moreno. Bottom row (l-r): Alison Keelen, Joanne Campione, Kristina Morris, Jimmy Kriece, Gabrielle Gornelli, Kristin Leventowski, Joseph Pettito and Mike Pettito.

Also from Bloomfield, Carmine Campione won the 8-and-under free.

Other winners in the freestyle, according to age group were James Judge, Belleville's Cindy Moreno and Cherylanne Piegaro, N.J.'s Justine Grossman, Belleville's Melissa Keelen and Nutley's Kristen Pascal.

After seven races Blue and White were tied at 33 apiece.

The final freestyle race was in the 16-and-under division. Brian Keelen of Belleville took first with Tarah Signorelli and Arielle Lane quickly behind.

There were eight races in the breast stroke starting with the 7-and-under group, with Emily Schaffer claiming her second win.

First place finishers in the remaining breast stroke races include Brian Jones, Tracey Keelen, Cindy Morano and Cherylanne Piegaro for their sec-

ond wins. Stephanie Campione, and Kristen Pascal and Brian Keelen also taking their second firsts.

After 14 races the Blue team took the lead at 56, just one point ahead of the White's 55.

Emily Schaffer continued to sweep the 8-and-under division winning the backstroke and butterfly.

Cindy Morano made Belleville proud by achieving another win in the back while placing second in the butterfly.

With each race, both teams pulled narrowly ahead in an alternate fashion.

Cherylanne Piegaro and Melissa Keelen, both of Belleville, continued to shine winning the 11 and 13-year-old backstroke consecutively, and Clifton's Carla Franciose earned her aging rigths winning the 13-year-old butterfly.

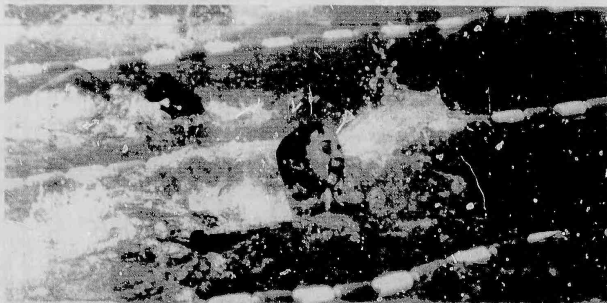
Tarah Signorelli notched her first win the 16-and-under

backstroke defeating Brian Keelen in a close fight. Yet, Keelen came back and clearly took the gold in the 16 fly.

Winners in the Individual Medley in order of age group were Emily Schaffer, Tracey Keelen, Carla Franciose and Brian Keelen.

Mike Morano won the Novice Freestyle, a race for rookie swimmers. A highlight of the novice and 7-and-under races was the efforts of tiny Alison Keelen. Alison was aided by her older brother Brian because 12 1/2 meters is a long distance for such a little body.

The final event, the team relay, would decide the meet. Entering the race Blue was ahead 120 to 111. If white held on to win the relay, they would have claimed the victory. However, Blue dominated, finishing by a lap to win the intersquad meet, 130-111.



GASP...Belleville's Joe Pettito takes a breath during the freestyle race. (Left)



READY, GO...Arielle Lane of Belleville dives into her lane at the start of the 16-year-old back.



Touch football applications still available

Applications for the Belleville Recreation 1996 Touch Football are now available at the Recreation office.

Boys or girls ages 7-10 can play touch football, if they so choose. Belleville children who will be 7 by December 31 and who will be no older than 10 on December 31, are eligible. All returning players must re-apply.

For Touch Football, all competi-

ed applications must be returned to the Recreation Department, 407 Jordanon Street, with birth certificates. The registration deadline for Touch Football will be August 23.

Children are advised not to register for more than one fall sport since football, soccer and touch football games and practice schedules conflict.

Call 450-3422 for other information.

Hole-in-one

On the 120-yard 11th hole, Charles Molinaro scored a hole-in-one at Hendricks Field in Belleville. He was using an eight-iron. Molinaro was playing with Phil Mintz, Jack Rose and Tom Rizzolo for some weekend golf.



Mary Rafft

Mary C. Rafft, 80, of Belleville died Aug. 10 in Clara Maass Medical Center, Belleville.

A Mass was offered Tuesday in St. Anthony's Church, Belleville, following the funeral from the Megaro Memorial Home, Belleville. Mrs. Rafft was a seamstress in the Newark-Belleville area for 20 years before retiring 20 years ago. She was a member of the

Amalgamated Ladies Garment Workers Union, Newark.

Born in Newark, she moved to Belleville four years ago.

Surviving are a son, Ronald; a daughter, Linda Scovel; two brothers, Bruno and Edward Procaccini; three sisters, Jean Montellione, Faye Frimmer and Diane Jeannotte; three grandchildren and a great-grandchild.

Obituaries

John Stivale

Services for John "Bobby Breen" Stivale, 71, of Belleville were held Saturday in Caggiano Memorial, Montclair.

Mr. Stivale, who died Aug. 7 in his home, was a cab driver with the Brown and White Cab Co. and Yellow Cab Co., both of Montclair, before retiring last year. Earlier, he had been a driver with the Tuscan Dairy in Newark for 27 years.

Mr. Stivale was an Army paratrooper during World War II. He

was a member of the Glen Social Club in Montclair.

Born in Montclair, he lived in Belleville for four years.

Surviving are his wife, Roberta; two daughters, Marlene Nagy and Denise; two sons, John and James; two stepdaughters, Debra Foglia and Sandra Kalicki; a stepson, Henry McVay; a brother, William; two sisters, Ida Casimo and Angie Petrucci, and 12 grandchildren.

Leo Sylvester

A Mass for Leo G. Sylvester, 81, of Belleville was offered Tuesday in St. Mary's Church, Belleville, following the funeral from the Megaro Memorial Home, Belleville.

Mr. Sylvester died Aug. 9 in Clara Maass Medical Center, Belleville.

Mr. Sylvester was a silk screener for IT&T, Nutley, before retiring.

He then was a maintenance man for the Turtle Back Zoo, West Orange, for 22 years.

Born in Hoboken, he lived in Belleville for 42 years.

Surviving are his wife, Antoinette; a son, Leo Jr.; a daughter, Patricia Bryce; a sister, Virginia Perrone; three brothers, Edward, Kenneth and Robert, and four grandchildren.

Medical miracles start with research

American Heart Association
Fighting Heart Disease and Stroke

IRVINE

Cozzarelli Memorial Home

Established 1885

IN YOUR TIME OF NEED
"A Family Name You Can Trust"



James J. Cozzarelli Jr., Owner/Manager
276 Washington Ave., Belleville, NJ • 759-1114

Lena Incontrera

A Mass for Lena Incontrera, 80, of Old Bridge was offered Aug. 9 in St. Anthony's Church, Belleville, following the funeral from the Zarro Funeral Home, Bloomfield.

Surviving are a son, Paul; a daughter, JoAnn; three brothers, Carmine, John and Rocco D'Acchino; a sister, Rose Bucco, and a grandchild.

Worship With Us

CHRIST EPISCOPAL CHURCH

393 Washington Ave., Belleville

Sunday Services:

8:15am, Holy Communion
9:30am, Sunday School
10am, Holy Communion (with Nursery)

Everyone is Welcome!

The Rev. Carolyn Lumbard, Rector

751-0616

Nutley Abundant Life

Worship Center

390 Washington Ave., Nutley

Sunday: 9am Sunday Bible School

All Ages

10:00am Morning Worship

Children's church provided at all services ages birth through nine.

Thursday: 7:30pm

Revelation Knowledge Seminar (Pastor Bruno teaching)

667-4329

VINCENT UNITED METHODIST CHURCH

100 Vincent Place, Nutley

"In The Heart Of Town"

SUNDAY WORSHIP

10:00 am

also, in addition on

TCI, CHANNEL 19

Sunday 1pm / Wednesday 3:30pm

"A Good Week"

CHILD CARE PROVIDED

SUNDAY SCHOOL FOR ALL

Leon F. Weaver,

Pastor

667-5440

List Your Church

In Our Worship

Calendar.

Call For Info

&

Rates Today!

667-3000

"Celebrating Our 175th Year"

PARK UNITED METHODIST CHURCH

Broad & Park Sts., Bloomfield

SUMMER SUNDAY WORSHIP

10:00AM

Childcare & Transportation Provided

HOLY COMMUNION

First Sunday of the Month

Rev. Wayne Jack Plumstead,

Pastor

429-7745

United Church of Christ

GLEN RIDGE CONGREGATIONAL CHURCH

195 Ridgewood Ave., Glen Ridge

SUNDAY SERVICE

10:15am

Child care is provided at all services.

For information about our many programs please contact the main office.

The Rev. Joseph David Stinson,

Minister

You are always welcome

at the Glen Ridge Congregational Church

743-5596

SHERIFF'S FILE NO. 96-014705

SHERIFF'S SALE

SUPERIOR COURT OF NEW JERSEY, CHANCERY DIVISION, ESSEX COUNTY, DOCKET NO. F896394

FEDERAL NATIONAL MORTGAGE ASSOCIATION, PLAINTIFF vs. CORNELIO UCCOLLO, WIDOWER, ET ALS, DEFENDANTS.

Execution For Sale of Mortgaged Premises.

By virtue of the above stated writ of Execution, to me directed, I shall expose for sale by Public Auction, in SHERIFF'S OFFICE, Essex County Courts Building in Newark, on Tuesday, September 10, 1996, at one-thirty P.M. (Prevailing Time)

Commonly known as: 000006925 CROSS ST. BELLEVILLE, NJ 07109

Lot: 49 Block: 712

Size: 45 x 100 feet

Distance to nearest cross street: 630.81 feet

Nearest cross street: NEWARK AVENUE

A full legal description can be found in the office of the Register of Essex County.

A deposit of 20% of the bid price in certified funds is required at the time of sale.

The approximate amount of the Judgment to be satisfied by said sale is the sum of SIXTY ONE THOUSAND EIGHT HUNDRED EIGHTY TWO AND 78/100 DOLLARS (\$106,382.78), together with the costs of this sale.

The Sheriff reserves the right to adjourn the sale from time to time as provided by Law.

Newark, N.J. August 5, 1996

ARMANDO B. FONTOURA, SHERIFF

Shapiro & Kreisman Attorneys

Belleville Times August 15, 22, 29, September 5, 1996

Fee: \$77.08

B96-432

B96-429

B96-428

B96-428

B96-428

B96-428

B96-428

B96-428

B96-428

B96-428

B96-428

B96-428

B96-428

B96-428

B96-428

B96-428

B96-428

B96-428

B96-428

B96-428

B96-428

B96-428

B96-428

B96-428

B96-428

B96-428

B96-428

B96-428

B96-428

B96-428

B96-428

B96-428

B96-428

B96-428

B96-428

B96-428

B96-428

B96-428

B96-428

B96-428

B96-428

B96-428

B96-428

B96-428

B96-428

B96-428

B96-428

B96-428

B96-428

B96-428

B96-428

B96-428

B96-428

B96-428

B96-428

B96-428

B96-428

B96-428

B96-428

B96-428

B96-428

B96-428

B96-428

B96-428

B96-428

B96-428

B96-428

B96-428

B96-428

B96-428

B96-428

B96-428

B96-428

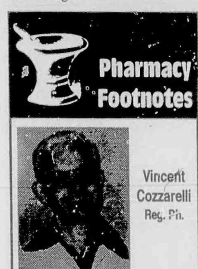
B96-428

B96-428

Resident named to Dean's List

Jonathan Black, son of Mrs. Carolyn Lumbard of Washington Avenue, Belleville, was named to the Dean's Honor List at Gettysburg College, Pa.

To be named to the Dean's Honor List, a student must attain a 3.60 or higher or a 4.0 scale.



Pharmacy Footnotes

Vincent Cozzarelli Reg. Ph.

REDUCING STROKE'S EFFECT

First, it had been announced that half of stroke patients who were given the diet-dissolving drug TPA had a full recovery. Now comes word that a newer treatment involving the drug citicoline helped 53 percent of stroke victims to a full recovery. While TPA works by restoring blood flow to the brain, citicoline is a naturally occurring building block of cell membranes that helps injured membranes repair themselves. By limiting cell death, citicoline paves the way for the brain to repair damaged circuits or create new ones to restore functions lost in the stroke. The study of 259 patients found that citicoline can be given within 24 hours of a stroke. This window of opportunity gives citicoline an advantage over TPA, which must be given within three hours. TPA's use is also limited to fewer patients.

There are many advantages to using our services at ROSSMORE PHARMACY, 328 Washington Avenue (759-1568, 759-1956). They include free delivery, Medicare and Blue Cross approval, and a full selection of convalescent aids. We also have a gift department and a camera and film department. Stop by and see us from 9am to 10pm daily. Sun to 9pm Sunday.

HINT: There were no serious side effects associated with taking citicoline.

Join us under the bigtop for

While the tent is up, prices are down

Customer Appreciation Week

Aug 10-17

Red Tag Prices

Give Aways & Refreshments

NEW 1996 PONTIAC SUNFIRE 2 DR

4 cyl eng, auto trans, pwr/steer/ABS brks, air cond, dual air 4 cyl eng, auto trans, pwr/steer/ABS brks, air cond, dual air bags, rr def, am/fm stereo cass, tilt, cruise, trip odom, 12,000 miles per year then 18¢ per mile thereafter. No down payment. First month's payment, \$300 refundable security deposit & \$545 bank acquisition fee due at lease inception. Purchase option at lease end is fair market value. Total of payments \$5552 + security deposit + bank fee = Total cost \$10,397. Lessee responsible for excess wear & tear. Qualified buyers.

\$199 per mo.

NEW 1996 PONTIAC BONEVILLE 4 DR

6 cyl eng, auto trans, pwr/steer/ABS brks/winds/lks, air cond, dual air bags, rr def, am/fm stereo cass, tilt, cruise, trip odom. Stk#143. VIN#T422096P. MSRP \$22,374. PRICE INCLUDES \$750 FACTORY REBATE

\$19,950

Buy for

DeMassi PONTIAC

IN LYNDHURST

939-6100

EVERY DAY LOW LEASE PRICES ALL MAKES & MODELS

PARK & RIVERSIDE AVE. LYNDHURST

★★★★ FIVE STAR SERVICE EXCELLENCE AWARD WINNER

YOUR LOCAL PONTIAC DEALER FOR BIGGEST SAVINGS & BEST T.L.E.



Prices include all costs to be paid by a consumer except for licensing, registration & taxes. s.

SCHOOL DAYS Are Here Again!

RAMSTHALER
ELECTRICAL CO.
RESIDENTIAL • COMMERCIAL • INDUSTRIAL
SPECIALIZING IN:
• Service Upgrades • Interior Lighting Design
• Exterior Lighting Design
• Landscape Lighting Design • Electrical Renovations
• Pools/Jacuzzis/Hot Tubs
• Satellite Dishes • Cable TV Wiring • Telephones
BONDED - INSURED - FREE ESTIMATES
John Ramsthaler • Danny Kolar
667-6790 • 794-7190
License # 12321 Business Permit # 12321

**24 HOUR
EMERGENCY
SERVICE**

GABRIELE MASONRY
All Types Of Masonry
• Brick & Block Work
• Steps • Sidewalks • Patios
• Foundations • Driveways
• Brick Pavers
Free Estimates ~ Fully Insured
284-1972

**I Will Clean Your Home,
Apt. or Office To A
Sparkle**
• Experienced • Reliable
• Trustworthy
• Reasonable Rates
• Excellent References
CALL MARIA
589-3857

TOM F. GOGLIA & SON
ELECTRICAL
CONTRACTORS, INC.


• Commercial
• Residential
• Industrial
FULLY INSURED & BONDED
FREE ESTIMATES **667-1111** LICENSE #12137

**BLINDS
UNLIMITED**
CUSTOM MADE
WINDOW TREATMENTS
FACTORY DIRECT TO YOU!
UP TO 70% OFF
MANUFACTURERS LIST ON SELECT MERCHANDISE

• VERTICALS
• MINI & MICRO
BLINDS
• WOOD BLINDS
• SHUTTERS
• CUSTOM CORNICES
• SILOUETTES
• PLEATED SHADES
• Free Estimates
• Free Installation

CALL FOR OUR SHOP AT
HOME SERVICE
751-7734
"WE BRING THE
WAREHOUSE TO YOU"

Colabelli
• Landscaping
201-751-0588
COMMERCIAL • RESIDENTIAL
• Maintenance • Design • Shrubs
• Mulch • Stones • R.R. Ties
• Top Soil • Drainage Systems
• Patios • Pavers
FREE ESTIMATES • FULLY INSURED


Mc DANIEL
Enterprises Co.
Garage Doors
Electric Door Openers
- Sales - Service - Installations -
FREE ESTIMATES - FULLY INSURED

Established 1973
667-3943

Silk Flowers -N- Stuff
ARRANGEMENTS FOR ALL OCCASIONS
Weddings ~ Banquets
Shows ~ Favors
• Dried Flower Arrangements •
• Wreaths • Eucalyptus
Let Our Professional Touch Add
"Your" Special Look To Every
Room In Your Home.

Michelle & Linda
(201) 680-8114 • Bloomfield, NJ

**MONTGOMERY
MOTORS**
Auto Repairs & Service
Wholesale Tires - Auto Glass
Ken Kubritski

251 Montgomery St.
Bloomfield
(201) 429-7004

**KBT
BUILDERS**
15 YEARS
EXPERIENCE
"WE AT KBT CUSTOMIZE EVERYTHING
FROM OUR CREATIVITY TO THE LETTER
OF OUR WORD."
ALL PHASES OF CONSTRUCTION/RENOVATION
• ADDITIONS
• DORMERS
• SOLARIUMS
• CUSTOM-BUILT DECKS
• KITCHENS
• SIDING
• THERMAL REPLACEMENT
• WINDOWS
• SKYLIGHTS
• BATHROOMS
• OFFICE BUILDINGS
OUR COMMITMENT TO OUR CUSTOMERS.....
• FREE AND COMPETITIVE ESTIMATES
• SPECIFIC CONTRACTS
• DEPENDABLE AND QUALITY WORKMANSHIP
• WE LEAVE ALL JOB SITES SPOTLESS
FULLY LICENSED AND INSURED
284-0022
IN AFFILIATION WITH
KITCHENS BY TURANO
188 WASHINGTON AVE., NUTLEY, NJ

SCHOOL DAYS Are Here Again!

ESSEX SECURITY LOCKSMITHS

Fast Dependable Service
Industrial - Residential

562 Main Street
Orange, NJ 07050
(201) 736-0008

669 Bloomfield Ave.
Nutley, NJ 07110
(201) 667-5656



NISIVOCIA LANDSCAPING

- Property Clean-Ups
- Weekly Maintenance
- Free Estimates
- All Phases of Landscaping



**20% OFF
ANY LAWN
SERVICE**

With Minimum Order \$100

667-9206

CHARMING LADY

~ Beauty Salon ~

144 Chestnut Street • Nutley
667-2133

Complete Hair Care & Coloring Specializing in
Perms and Cuts To Suit Your Special Look.

STARTING SEPTEMBER 3rd

~ Nails By Laura ~

Manicures ~ Tips ~ Wraps
Tuesdays 3-8pm

Laura Laino

By Appt. Only

A-ONE BLACK TOP

- CONCRETE •ASPHALT
- SEALCOATING
- PARKING LOTS
- PATCHWORK
- REPAIRS

15 Yrs.
Exper.

Free Estimates
No Job Too Small

661-4916
PAGER # 596-7170

BLUE RIBBON TIRE SERVICE SINCE 1929

COMPUTERIZED ALIGNMENT



★ HIGH PERFORMANCE

★ RV TIRES



BRIDGESTONE

CUSTOM WHEELS

GOODYEAR

939-7075 1-800-273-7075



867 RIVERSIDE AVE., LYNDBURST

Foot Of
Juncy
Ave.



The Lights Are On...

Because Your Home Was Wired
By A Superior Electrician!

See the light by calling us for electrical services.

CHARLES KERR

ELECTRICAL CONTRACTOR

•COMMERCIAL •RESIDENTIAL •INDUSTRIAL

LICENSED • INSURED • BONDED

LICENSE NO. 11345

- Household Repairs •New Installations
- Lighting Retrofits •Service Upgrades
- Renovations •Plant Maintenance
- Full Service - Voice, Data Communications,
Sales, Service & Consultation

~ No Job Too Small ~

680-8117

24HR
EMERGENCY SERVICE

ESSEX COUNTY

PAINTING &
WALLPAPERING

748-4938



- *****
- CALL
- "ANGELO"
- TODAY!!
- SPONGE
- PAINTING
- CALIFORNIA
- CEILINGS
- POPCORN
- CEILINGS
- *****

FREE ESTIMATES - FULLY INSURED

DANIEL STEVEN SALON

12 First Ave., Bloomfield
748-4931

A Full Service Salon

Women ~ Men ~ Children

•MANICURES •PEDICURES

•TIPS •WRAPS •ACRYLICS

•HAIRCUTS •PERMS

•PROFESSIONAL HAIR COLORING

Make Your
Back To School
Haircut
Appointments
Early!



MARY'S THEATER PARTIES

Aug. 25 - Resorts A.C. \$13 Coin
Sept 8-12 - Wildwood Vacation
Sept. 22 - Grandma Sylvia's Funeral
Sept 27 - Steve & Edie
Oct. 6-13 - Cruise to Jamaica (from NY)
Oct. 17 - Miss Saigon
Oct. 22 - Victor/Victoria
Oct 25 - Liza Minelli
Nov 2 - Redding PA - Shopping Tour
Nov 13-17 - Las Vegas Getaway -
Flamingo Hilton
Nov 14-18 - Branson, Mo. - Christmas Shows
Nov. 21 - Brigadoon (NYC Opera)
Dec 5, 11, 12, 16 & 18 - A Christmas
Spectacular - Radio City
Dec 15& 19 - A Christmas Carol -
Paramount Theatre

LIMITED SEATS/BOOK EARLY!

All the above include Orchestra Seats, Dinner,
Transportation, Taxes & Tips for Dinner.

Individuals - Groups - Call for Information

998-1268

RACIOPPI'S TARALLES

169 Bloomfield Ave., Bloomfield
680-0081



BACK-TO-SCHOOL

MADE FRESH DAILY

HOT
PEPPER

FENNEL

GARLIC

SPECIAL
ORDERS

PIZZA

SCHOOL DAYS Are Here Again!

D.J.s For All Occasions

Affordable Experienced

D.J. Rosario V. 667-0812

D.J.'S

D.J. Mark 667-6156

UNLIMITED

40's - 90's

DANCE MUSIC - OLDIES - ROCK & ROLL



ELITE

LAWN MAINTENANCE

PROPERTY CLEAN-UPS
COMPLETE LAWN CARE
•THATCHING •AERATING
•SEED •TOP SOIL •SOD •MULCH
•FLOWERS •DECORATIVE STONE
REASONABLE RATES • INSURED
RESIDENTIAL • COMMERCIAL

WEEKLY MAINTENANCE

743-3326
or **751-6575**

Professional Painting

Commercial & Residential

- NO JOB TOO SMALL
- REASONABLE RATES
- FREE ESTIMATES
- FULLY INSURED

201-338-1734

We Also Do Power-Washing!!!

Back To School Specials From...

NOT JUST NAILS

- Tips & Acrylics ~ \$34.99
- Tips & Wraps ~ \$29.99
- Manicure & Pedicure ~ \$28.00

50% OFF
ANY SERVICE
1st time clients only!
Not to be combined with
any other offer.
(must present coupon)

20% OFF
any retail item
(must present coupon)

316 Greylock Pkwy., Belleville
751-6887

M & T TILE

• Sales • Service • Installation

OVER 10 YEARS EXPERIENCE

~ Ceramic ~ Marble ~
Floors ~ Countertops ~ Showers
~ Repairs ~

Free Estimates • Fully Insured
Referrals Available

680-9561

VALKYRIE CONSTRUCTION, INC.

HOME HEATING OIL TANKS
REMOVALS/ABANDONMENTS

Call For Free Estimate
(201) 667-1299

Fully Insured - 20 Years Experience
N.J.D.E.P.E. Certified
Nutley, NJ

DANIEL STEVEN SALON

12 First Ave. Bloomfield
748-4931

THE "ETHNIC" HAIR SPECIALISTS



- Wraps
- Scrunchies
- French Rolls
- Finger Waves • Relaxers
- Pin Curls

CHARISMA'S
BACK TO SCHOOL SPECIAL

Bring a friend & receive 50% off any hair service of your choice!

Service must be of equal or lesser value. Time only.
Offer Expires Sept. 30, 1996.

ENVISION Technologies

Local and Wide Area Networks
Communications and Workgroup Solutions.
Specializing in the Installation and Support of
Multiprotocol Environments, Novell Netware, OS/2,
WFW, Windows '95, and Windows NT.

Client/Server & Telecommuting Solutions using
Lotus Notes, MS-Back-Office, MS-Access and
PowerBuilder.

Nutley, NJ (201) 667-6846

COLABELLI CONTRACTING



PAINTING • RAILROAD TIES
PATIOS • STONES
MULCH • DRAINAGE
MASONRY WORK
BELGIUM BLOCK
INTERLOCKING PAVERS
KEY STONE RETAINING WALLS

201-751-4533

"DIAL" - A - SERVICE

The Best People to Service You are Only a Phone Call Away.
Why Not Call Them Today?

AIR CONDITIONING

Mark's
Major Appliance
Central AC • Heating
Appliance Repair
Service-338-4929
Reliable & Reasonable
24 Hr Emergency Serv.

CLEANING SERVICES

POLISH CLEANING
LADIES
Residential &
Commercial Cleaning.
10 Years Exp. Refs
avail. For free est.
call Barbara 450-8620
or 484-0432.

CONSTRUCTION

CITIZENSON & SONS
Construction, Inc.
Est. 1959 Fully Insured
All Phases Of
Construction
Residential Commercial
No Job Too Small
Free Est. 338-0862

ME CONSTRUCTION

Sheet Rocking
Plastering • Painting
Windows • Additions
Roofing • Bath &
Kitchen Remodeling
751-5273
Free Est. Low Prices

CARPET SERVICES

H.A. HOFFMAN
CARPET CLEANER
Introduction
LRVDR/Hallway \$69.95
2 Step Deluxe
Steam Process
20 yrs Exp. 284-0361

COUNTERTOPS

THE
COUNTERTOP
CONNECTION
Custom Vanities
Custom Cabinets
Custom-made Furniture
Re-Surfacing
A Large Selection of
Colors, Textures &
Finishes To Choose
From.
751-7288

ELECTRICIANS

AURIMMA ELECTRIC
Electrical Contractors
Over 50 years of
Service
RES. • COM. • THD.
Free Est. LIC#10762
751-5926
Charles Auriemma Prop.

ELECTRICIANS

BRITTE ELECTRICAL
CONTRACTORS INC.
Res. - Comm - Indus
Fully Ins. & Bonded
24 Hr Emergency Serv.
338-3535
Free Est. Lic. #10914
Mayrann Tarrant, Prop.

DE LUZO ELECTRICAL

CONTRACTING
Ind. Res. • Com.
Free Estimates
No Job too small/Too far
CALL 661-2937
License #11508

KERR ELECTRIC

Electrical Contractor
Comm./Res./Indus
Licenses #11345
Insured • Bonded
NO JOB TOO SMALL
Household Repairs
New Installations
Service Upgrades
Lighting Fixtures
24 Hour
Emergency Service
680-8117

TOM F. GOGLIA & SON

ELECTRICAL
CONTRACTORS, INC.
Commercial
Residential
Industrial
Fully Insured & Bonded
667-1111
Free Est. Lic. #12137

ENTERTAINMENT

DJ'S
UNLIMITED
Music
For All Occasions
DJ Rosario V-667-0612
or beep 802-0770
DJ Mark-667-6156 or
307-2156

DISC-GO-DJ'S

\$75.00 HOUR
"No Hidden Charges"
Latest CD Technology
"Late" Music
"Light Show"
483-0543
Pager 613-8075

FENCES

DOWLING FENCE INC.
Expert Installations
Chain Link
Decorative Wood
Repairs Free Est.
Reasonable Prices
284-1289

GARAGE DOORS

Mc DANIEL
Enterprises Co.
GARAGE DOORS
Electric Door Openers
Sales Service
Installations
Free Est. Fully Insured
ESTABLISHED 1973
667-3943

GUTTERS

"GUTTERS & LEADERS"
Cleaned • Repaired
Roof & Siding Repairs.
"In/Ext. Painting.
CALL AL ROBERTS
751-5462 Free Est.

BILL'S

GUTTER SERVICE
"Gutters & Leaders"
Cleaned & Flushed
Screening & Repairs
Minor Tree Trimming
338-0448
24 Hour

HOME IMPROVEMENT

"COPPOLA"
& SONS, INC.
Est. 1942 50 Yrs. Exp.
Aluminum & Vinyl
Siding
Roofs/Doors/Additions
Repairs/Windows/
Gutters
429-9266

HOME IMPROVEMENTS

25 Years Experience
Carpentry • Kitchens
Plumbing • Bathrooms
Rec. Rooms
Decks • Roofing
Additions • Free Est.
Window/Door Repl.
Licensed Contractors
CHARLIE 759-4317

ROOFING

GUTTERS
Siding • Vinyl & Alum
Wildlife Control.
Chimney Caps.
Free Estimate
Call Bob 751-4155
R.C. HOME
IMPROVEMENTS

PETER DUGAN

235-0364
All Carpentry
Roofing
Siding • Gutters
Sheet Rocking
Free Estimates

HOME IMPROVEMENT

NICOSIA
& SONS
CONSTRUCTION
CO., INC.
Add a Level
Dormers • Bathrooms
Additions
Kitchens
Finished Basements
Built on
Recommendation
35 Years Experience
Free Est. Fully Ins.
751-7171

MISC. SERVICES

BLINDS
UNLIMITED
Custom Made Window
Treatments Factory
Direct To You
Up To 70% Off
Manufacturers List On
Select Merchandise
Vertical • Shutters
Micro & Mini Blinds
Wood Blinds • Silouettes
Custom Cornices
Pleated Shades
GRABER LEVOLOR
HUNTER DOUGLAS
Free Installation
Free Estimates
Shop At Home Service
751-7734

ERIC LIGHTING CO.

Distributors of
Wholesale Lighting
Bulbs, Lamps &
Ballasts
Call or Fax:
661-5181

LANDSCAPING

2 HIGH SCHOOL BOYS
ARE WILLING TO MOW
LAWNS, TRIM HEDGES
AND WEED FOR YOU.
NUTLEY AREA.
REASONABLE RATES.
VERY RELIABLE.
CALL 661-9544

COLABELLI

LANDSCAPING
Comm./Res.
Maintenance
Design • Shrubs
Mulch
R.R. Ties
Top Soil
Patios • Pavers
Drainage Systems
Free Est. Fully Ins.
751-0588

MILTON'S

Landscaping Design
Specializing in:
Patios • Walkways
Shrubbery Design
Guar. Lowest Prices
483-0543 or
Pager 613-8075

MASONRY

BELLUCCI MASON
CONSTRUCTION
All Brick & Block Work
Belgium Block • Steps
Foundations • Patios
Fireplaces • R.R. Ties
Basement Waterproofing
Free Est. Fully Insured
Over 35 Yrs. Exper.
667-3606

COLABELLI

CONTRACTING
The "Masonry Specialist"
"PAINTING"
Interlocking Pavers
Keystone
Retaining Walls
Railroad Ties • Patios
Stones • Belgium Block
Mulch
751-0588

IN A HURRY?

FAX IN YOUR
CLASSIFIED
AD!
667-3904

P.A. CARSILO

& SONS, INC.
MASONRY
Driveways • Sidewalks
Stairs • Plastering
Retaining Walls
R.R. Ties • Backhoe
Waterproof
Fully Ins. • Free Est.
676-8390

GABRIELE MASONRY

All Kinds of Masonry
Brick & Block Work
Steps • Sidewalks
Patios • Foundations
Basement Waterproofing
Additions Driveways
Fully Insured
Free Est. 284-1972

J & B MASONRY

CONTRACTORS
Fully Insured/Free Est.
All Types of Brick
& Block Work
Steps • Sidewalks
Patios • Foundations
Interlock Pavers
Foundations • Steps
Belgium Blocks
City Work • Reas. Prices
Complete Additions
661-0532

CLASSIFIED

Accepts
Visa &
Mastercard

PLASTERING & REPAIRS

PLASTERING:
Patch-work Specialties.
Specializing ONLY in
drywall/plaster repairs.
Old/New Free Est.
"No Patch Too Small".
338-5410, 25 Years Exp.

MOVING & STORAGE

A & B MOVERS
Making The Correct
Move For All Of NJ
Residential/Commercial
Small Pickups
Fully Ins. • Free Est.
License #PM00733
751-8299

PAUL'S MOVING

& TRUCKING CO.
Local & Long Distance
Packing & Light
Deliveries
Lic. PM0067
675-6440

PAINTING

Interior/Exterior
Quality Work
Reasonable Rates
Free Est. Fully Ins.
667-5228

BILL MC DONALD

PAPERHANGING
Trained by
THE PAPERHANGING
INSTITUTE
Free Estimates
667-9834

ED STELEY

PAINTING
Interior • Exterior
Staining • Varnishing
Powerwashing
Free Est. Fully Ins.
450-4942

McGuire & Sons

Interior • Exterior
Power Washing
Siding & Decks
Cleaned & Refinished
955-2520
or beep 393-7527
Senior Citizen Disc.
30 Years experience

PAINTING PLUS

Interior/Exterior
Resident/Comm.
Powerwashing
All Home Repairs
Wallpaper & Removal
Family owned/operated
Fully Ins. - Free Est.
Call Chris or Pete
751-5117

PAINTING

ANY 3
ROOMS
PAINTED.
\$199.00
Plus Paint
FAST, CLEAN
WORK
A Husband &
Wife Team
Sammy &
Barbara
667-7440

PAINTING

INTERIOR/EXTERIOR
To suit your schedule
DAY/NIGHTS/
WEEKENDS
Reas. Rates Free Est.
Call Mike
235-0522

R. BURGHARDT

PAINTING &
PAPER HANGING
25 YEARS
EXPERIENCE
FREE ESTIMATES
BOB 667-5478

SAL POLIZOTTO

Painting & Decorating
Interior • Exterior • Res/Com
Expert on Paper
Hanging
Call for Free Estimate
24 Hr. Serv. Fully Ins.
939-8781

PERFORMANCE

PAINTERS
Quality Int/Ext Painting
at Affordable Prices
Professional,
Courteous & Neat
Free Estimates
235-0532 or 667-2545

RE-NU-IT

Kitchen & Bath
Refinishing
Tub/Tile Cabinets
Refrigerator • Stove
Furniture • Free Est.
751-2250

RUBBISH

REMOVAL
ALL TYPES OF
RUBBISH REMOVED
Free Estimates
Reasonable Rates
661-9692

TONY'S RUBBISH

REMOVAL
Clean up
Houses • Attics • Yards
Basements • Garages
Free Estimate Call Tony
201-438-5232

CHARGE

IT!
CLASSIFIED
Accepts
Visa &
Mastercard
201 667-3000

PLUMBING

Keep Your
Plumbing Young
J.G. YOUNG
& SONS, INC.

PLUMBING

HEATING
AUTOMATIC FIRE
SPRINKLER
SYSTEMS
State Licenses
No. 3684 & No. 990

REMODELING

Kitchens & Bathrooms
Remodeled
Gas Heat
Hot Water Heaters
Electric Sewer
Cleaning
Residential,
Commercial &
Industrial
Repairs
Alterations
New Construction
14 New St. Belleville
759-1476

WINDHEIM

PLUMBING & HEATING
418 Franklin Ave.
NUTLEY
Gas Heat
Hot Water Heaters
Dishwashers
Modernizing
Bathrooms
Kitchens
667-6886
Lic.#143 We Accept:
Mastercard Visa
Diner's Club
Carte Blanche

SAL POLIZOTTO

Painting & Decorating
Interior • Exterior • Res/Com
Expert on Paper
Hanging
Call for Free Estimate
24 Hr. Serv. Fully Ins.
939-8781

PERFORMANCE

PAINTERS
Quality Int/Ext Painting
at Affordable Prices
Professional,
Courteous & Neat
Free Estimates
235-0532 or 667-2545

RE-NU-IT

Kitchen & Bath
Refinishing
Tub/Tile Cabinets
Refrigerator • Stove
Furniture • Free Est.
751-2250

RUBBISH

REMOVAL
ALL TYPES OF
RUBBISH REMOVED
Free Estimates
Reasonable Rates
661-9692

TONY'S RUBBISH

REMOVAL
Clean up
Houses • Attics • Yards
Basements • Garages
Free Estimate Call Tony
201-438-5232

TILE CONTRACTORS

GENNA TILE
Complete Bathroom
Modernization
No Job Too "Small"
Or Too "Big"
661-5172

JOE GRADY

Ceramic Tile Installed
Regretting Repairs
Complete
Modernization
Fair Honest Prices
Free Estimates
CALL 667-1776

TREE SERVICE

ACE TREE SERVICE
Take Downs • Topping
Pruning • Planting
Stump Grinding
Snow Plowing
Fully Ins. Free Est.
669-0088 743-0088

WEDDINGS

SILK
FLOWERS-
N-STUFF
Custom Arrangements
For All Occasions
Showers • Weddings
Banquets • Parties
HOME DECOR
Let Us Bring Your
Own Personal Touch To
Every Room In Your
Home
Sik or Dried Flowers
680-8114

BOOKKEEPING

WORKING TOO
HARD?
BOOKS A MESS?
Let A Full Charge
Bookkeeper Handle
All Your Accounting
Needs From Her
Home!
Reasonable Rates
Flexible Hours
Call Marie 667-1940

CONCRETE

A-ONE
BLACK TOP
Concrete • Asphalt
Sealcoating
Patchwork/Repairs
Driveways
Parking Lots • RR Ties
NO JOB TOO SMALL!
Property Clean-Ups
Rubbish Removal
15 Yrs Exp. Free Est.
661-4916
or Pager #596-7170

CONCRETE

A-ONE
BLACK TOP
Concrete • Asphalt
Sealcoating
Patchwork/Repairs
Driveways
Parking Lots • RR Ties
NO JOB TOO SMALL!
Property Clean-Ups
Rubbish Removal
15 Yrs Exp. Free Est.
661-4916
or Pager #596-7170

NUTLEY
RADIO & AIR CONDITIONING SERVICE
998-3913
Central Air Conditioner
Tune-Up Special
Turn-On Unit • Check Filters • Check Freon
Level • Check Belts • Check Thermostat
ONLY \$69.95 (Reg. \$90.)
Parts & labor necessary at additional charge
With This Coupon Expires 9/1/96
CENTRAL AIR - 2 TONS INSTALLED
ONLY \$3200 (Ductwork Included)
Call For More Details
TV HOUSE CALLS - \$19.95
(plus parts & labor) With Coupon Offer

PETRELLA ASPHALT PAVING
- NOW ALSO FEATURING -
Asphalt paving in colors with the look & feel of
hand-laid brick. Ideal for res./comm. & ind.
where decorative paving is desired.
Established 1912
Call Now
778-9393 • 233-9393 • 661-9393

Kitchens FREE In Home Estimates
Fully Insured
Custom Cabinetry
By **Turano**
Specializing in Corian, Granite & Formica
countertops for Kitchen & Bath.
201-235-0011
Showroom: 188 Washington Ave., Nutley

AIRTECH
Heating & Cooling Contractors
\$35 OFF
Any installation of
humidifier, attic
ventilator, or electric
air cleaner.
\$75 OFF
Any installation
of central air.
Carrier
AIRTECH installs a high efficiency air
conditioning system suitable for any
application in your home.
338-4212
FULLY INSURED • CERTIFICATION PROGRAM • DUCT ESTIMATES

SILVER & GOLD
BUYING CENTER, INC.
126 Bloomfield Ave., Bloomfield (across from Huggins)
748-4411
Open 10-5 Mon.-Fri., 10-3 Saturday
HIGHEST PRICES PAID FOR ALL
SILVER, GOLD, DIAMONDS & GEMS
Also Selling
New & Estate Jewelry
BUYING & SELLING
BASEBALL CARDS

RAMSTHALER
ELECTRICAL CO.
RESIDENTIAL • COMMERCIAL • INDUSTRIAL
SPECIALIZING IN:
• Service Upgrades • Interior Lighting Design
• Exterior Lighting Design • Landscape Lighting Design
• Electrical Renovations • Pools • Jacuzzi's • Hot Tubs
• Satellite Dishes • Cable TV Wiring • Telephones
BONDED - INSURED - FREE ESTIMATES
John Ramsthaler • Danny Kolar
667-6790 • 794-7190
License # 12321 Business Permit # 12321

FRED'S
Lawn Care etc.
661-3565
Spring Clean-Ups
Weekly Maintenance
Free Estimates
Driveway Sealcoating &
Repairs
"One Call Does It All!"
15% OFF ANY
LAWN SERVICE
WITH MENTION OF THIS AD.
Expires 10/1/96

Senior Discounts
Free Estimates
Insured • Bonded
POWER PRO
Electrical Contractors
• Service Upgrades • Outdoor Lighting
• Residential/Commercial/Industrial Wiring
661-0455

VALKYRIE CONSTRUCTION, INC.
HOME HEATING OIL TANKS
REMOVAL/ABANDONMENTS
Call For Free Estimate
(201) 667-1299
Fully Insured • 20 Years Experience
N.J.D.E.P.E. Certified
Nutley, N.J.

THERE'S NO PLACE LIKE HOME

An advertising section

180 Centre St.
Nutley, N.J. 07110
667-3440

GEORGE E. MACMUNN CO. REALTORS

100 Woodport Road
Sparta, N.J. 07871
729-8727



OPEN HOUSE - SUNDAY - 1-4PM - NUTLEY
201 WHITFORD AVE. (Off Satterthwaite). Charming Nutley Park 3 BR colonial, Frpl. in LR, chestnut trim, 1 1/2 baths, Fam. Rm. on lower level, det. garage, immaculate condition. ASKING \$174,900.

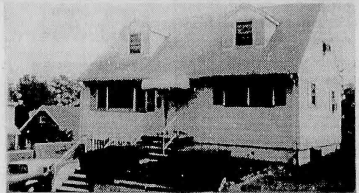


NUTLEY - SPRING GARDEN AREA - ASKING \$146,900.
One owner home in beautiful cond. and manicured lot. 3 BR's, maint. free exterior and taxes under \$4,000. A great starter or retirement home. CALL NOW!!

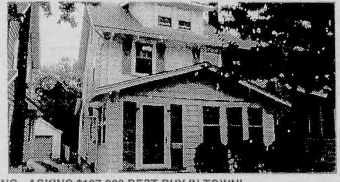
DO YOU KNOW WHAT YOUR HOUSE IS WORTH TODAY?

We offer a current market
value analysis...

Just pick up the phone & call.



NUTLEY - NEW LISTING - 2 FAMILY
Great starter home with 4 rooms & bath on 1st; 3 rooms & bath on 2nd, finished basement, gas heat, nice backyard, 1 car gar. ASKING \$178,000.



NEW LISTING - ASKING \$127,900 BEST BUY IN TOWN!
3 BR's on 2nd, 1 huge BR on 3rd, LR w/frpl, big DR, eat-in mod kit, den on 1st. Natural trim, det. gar. Great cond., & located on quiet St. in Belleville.

Another Schweppe Sale



This home at 124 Garden Street, Belleville was
successfully marketed by Louise Perello of our office.

Schweppe & Co.
REALTORS

744-4700

NEWS OF SAFETY

Protect Home Electronics From Lightning Strikes

(NAPS)—A "power surge" may not sound dangerous, but if it strikes your PC, TV or other electronic equipment, it can be a real problem and a financial pain.

It could take thousands of dollars to replace some of the sophisticated electric and electronic gadgets Americans tend to have at home yet, for a relatively small investment, most people can do a much better job of protecting them from the damaging effects of lightning, utility switching spikes and other electrical surges than they do now.

The average home gets eight to 10 surges from lightning every year; surges that range from 1,000 to 10,000 volts each. Such surges can destroy the microchips within sensitive electronic devices, leading to expensive repair or replacement costs.

Sometimes, the surge doesn't hurt the device right away, but the cumulative effect can disable the equipment over time. Each surge places wear and tear on the weakest points in any electronic component and, eventually, causes it to fail.

What's more, lightning doesn't have to hit a power line to fry your electronic gear. It can strike a tree in your yard and find its way into your house wiring through a ground connection.

Fortunately, there is something you can do to protect your



A bolt from the blue can wipe out your investment in a TV, PC and other electronics. A new device can make all the difference.

investment. You can now get a circuit breaker/surge arrester to protect your home's entire electrical system.

Circuit breaker/surge arresters, which typically retail around \$75 to \$150, can be easily retrofitted into existing home load centers (that gray box in your basement or garage), though you should have a qualified electrician install it.

Several companies in the U.S. manufacture these devices. Some are more rugged than others. One model can handle currents as high as 40,000 amperes. The typical lightning strike is 25,000 amperes.

For more information on whole-house surge protection, write Siemens Energy & Automation, P.O. Box 2407, Norcross, GA 30091-9828; or call 1-800-954-4114.

NUTLEY

REDUCED

WALNUT STREET TUDOR

Brick & stone front Yantacaw Tudor, extra large first floor highlight this 2 BR home! Central air, 2 zone heat 1 1/2 baths & 1st floor laundry. Owner wants offers! \$169,500.

FOUR BEDROOM COLONIAL

On oversized 90x125 lot, updated kitchen, new roof, powder room, finished rec room in basement, enc. front porch, lovely rear deck and low taxes! ONLY \$169,900.

Monaco Realty

74 Franklin Ave. Nutley

(Fax) 667-8799

667-8000

OWNERS WANT OFFERS

151 CONOVER AVENUE

Immaculate 2 family with 2 new kitchens, 2 bedrooms on 1st & 1 on 2nd. Good income property.

192 WHITFORD AVENUE

Offered in low \$170's this 6 room Nutley Park home should be the next to sell.

50 VALLEY ROAD

4 bedroom, 2 bath home with finished basement, large eat-in kitchen. Asking low \$170's.

NUTLEY REALTOR SINCE 1933

MEMBER OF GARDEN STATE MULTIPLE LISTING

EVERYONE KNOWS

GEORGE T. BOWES

681 Franklin Ave. Nutley • 667-3376

ATTENTION REALTORS

Be A Part Of Our Special Real Estate Section
Appearing Weekly In:

- The Nutley Sun
- Belleville Times
- Bloomfield Life
- Glen Ridge Voice

CALL FOR DETAILS & RATE INFORMATION

667-2100

NEGOTIATION ISN'T ALWAYS PLEASANT!



Let Us Negotiate For You.

DON'T WAIT...

~ Call Today ~

COSTANTINE REALTY

289 Franklin Ave., Nutley, N.J. 07110

(201) 667-7070

Residential
Sales
Rentals
Mortgages

Management
Investments
Appraisals
Notary

Weichert

BUY FOR \$1247 MO.



LOCATION, LOCATION, LOCATION!

OLEN RIDGE - Wonderful home located on quiet tree lined street looking for a new owner who will give a home "under budget" \$210,000.00.

W. Orange Office 731-6284

BUY FOR \$1009 MO.



LOTS OF OWNER PRIDE

NUTLEY - This 3 story is close to shopping, transportation, Woodbridge 3 bedroom brick ranch, eat-in kitchen, large family room and full bath, master bedroom with walk-in closet. \$165,000.

W. Orange Office 731-6064

BUY FOR \$1143 MO.



BROOKDALE SPILT LEVEL

BROOKDALE - Eye appealing 4 bedrooms 3 full bath level with central air conditioning system, priced to sell at \$189,500 (1874).

W. Orange Office 731-6064

BUY FOR \$1098 MO.



OPEN SUNDAY 1-5

25 Minutes to Bloomfield. Reduced Brookdale colonial offers large rooms, finished basement, fireplace, two car garage and more! \$184,900.

Upper Montclair Office 746-1515

BUY FOR \$909 MO.



OPEN SUNDAY 1-5

145 BROWN PLACE, Bloomfield. Wonderful 3 bedroom brick ranch, eat-in kitchen, large family room and full bath, master bedroom with walk-in closet. \$165,000.

Upper Montclair Office 746-1515

BUY FOR \$950 MO.



OPEN SUNDAY 1-5

19 Mountain Avenue, Bloomfield. Great buy in Brookdale, 1.5 bed, 1.5 bath, brick Tudor, oak park, 2000 and NYC landscaping, others, 2000 through.

Upper Montclair Office 746-1515

Upper Montclair Office

201-746-1515

West Orange Office

Serving the Caldwell/

West Orange Area

201-731-6034

Weichert
REALTORS

We Sell More
Because We Do More

For Mortgage info call 201-390-8100

For Insurance info call 201-601-6155

http://www.weichert.com 1 Technology, Advanced Real Estate Company

"THE CLASSIFIEDS"

For All Walks of Life

All Classified Ads automatically appear in all four of our papers. The Nutley Sun, Belleville Times, Bloomfield Life & Glen Ridge Voice.

All Transient Ads Must Be Paid In Advance!

First 4 lines.....\$16.91
Each Additional Line.....\$1.52

*Borders Available.....\$5.00
*Contract Rates
*Special Page Rates
*Business Card Page
*DIAL-A-SERVICE Rates

**CALL FOR
ADDITIONAL
INFORMATION
TODAY!**

201-667-3000

CREDITS:

Credits & adjustments are to be made only for errors which significantly alter the effectiveness of the ad, such as a wrong telephone number or price. Credits will not be issued for typographical errors or misspelled words. The newspapers can assume responsibility only for MAJOR errors in the first day's publication!

**CLASSIFIED DEADLINE - TUES, 12 NOON
DIAL-A-SERVICE DEADLINE - FRI, 3PM**

NAME _____
ADDRESS _____
PHONE _____
CATEGORY _____ RUN DATE _____
NUMBER OF INSERTIONS _____

Check Visa/M/C# _____
Expiration Date _____

MAIL COUPON TO:

**ORECHIO PUBLICATIONS
800 BLOOMFIELD AVENUE
NUTLEY, NJ 07110
ATTN: CLASSIFIED DEPT.**

PARTS ACCESSORIES SERVICES

BIR'S

ATTENTION! AUTO PARTS
WILL PAY CASH FOR ANY JUNK
CAR IN ANY CONDITION

Highest prices paid for late models

USED CARS & TRUCKS

991-4246 or 991-0081

USED PARTS 54 Stover Ave. Kearny USED PARTS

AUTO SALES

1978 Ford LTD.
Runs great \$375. or B/O
62K. Call 751-2133
after 5pm.

1981 Cadillac DeVille
Good for parts only! First
\$200 takes it! 429-1454
(leave message)

1982 Chevy Citation
2dr. V6, auto trans.
AC, orig. miles, exc.
mech. cond. \$700.
Call 744-1846

1984 Chevy, 4DR, very
good shape. Like new!
Send new rubber. Ask-
ing \$1,800. or B/O.
Call 751-2029.

1984 Monte Carlo -
47,000 mi. Mint condi-
tion. Garage kept. Full
power. Exc windows &
locks. A Must See!
Call 908-68-5644

1985 Buick Riviera
85,000 miles. PW, PB,
P/Beds, AM/FM
cassette. New tires.
\$1000. or best offer
Call 661-4889

1985 Chrysler LeBaron
4 dr. PS, PB, AC, auto,
4 cyl. Runs good. 66,000
mi. \$2999 or B/O.
751-4079

AUTO SALES

1985 Dodge 600
good cond. 79K. Asking
\$1200. neg. Call days
748-8980 ext 16. Eves.
weekends 429-0738.

1985 Mercury Cougar
80,000 miles. AC, AM/FM
stereo cash. 64,000
miles. Exc. cond. Runs
great! Best offer over
\$2000. 667-5195

1985 Pontiac Sunbird
4 door, auto, AC, AM/FM
stereo/cass. 64,000
miles. Beautiful cond.
Must see! Asking \$2150.
219-3398

1986 Lincoln Mark VII
LSC. Auto, all electric,
mint in and out, 91,000
miles. Well maintained.
New tires & brakes.
While/whenever interior.
Asking \$4499. Call:
(Days) 667-8000 or
(Eves) 751-3132

1987 Ford Van, F350
5,000 miles. Excellent work van,
\$8,500. just serviced,
\$14,000. negotiable
Call 680-4715

1987 Honda Accord DX
4 dr, auto, stereo/cass.
Good cond. clean. 106K
\$2800 neg. 450-1968

AUTO SALES

1987 Lincoln Mark VII
Fully loaded. 69,000
miles. Immaculate con-
dition. \$995. neg. 893-6411

1988 ALFA SPIDER QUAD
Convertible/hardtop, sil-
ver w/gray leather int.
A/C. All Options; 41,000
miles. Exc. cond. gen-
erated. \$5,500 284-1208

1989 Dodge Omni
4 door, auto, AC, stereo,
60,000 miles, 30 M.P.G.
Like new \$3950.
219-3398

1990 Chrysler 5th Ave.
Mint cond. 35,000 miles,
PS, PB, auto, landau
runk, many extras, gar-
age kept. 4 new Michelin
XHT tires. Asking \$9500.
783-7358

1990 Volvo 240
Station Wagon Black,
immac. cond. PW, PL,
heated seats, luggage
rack. \$10,200. 893-9311

1993 Eclipse GS
White, 33,000 miles, fully
loaded. A/C, stereo, 2000
mi. \$13,000. 235-0234

1993 Ford Escort
Wagon 6 cyl. Auto. PS,
PB, AC, AM/FM Stereo,
Cass. Excel. Cond., 34K
Asking \$7,500. 667-2133

1993 Mini Silver Eclipse
Mitsubishi, am/fm radio,
in, radio, 20,000 mi.
neg. Great Condition
Call 661-0657

1994 Honda Civic Ex.
4 dr, Fully loaded, a/c
sun roof, low mileage,
\$12,500. Call 284-0487

AUTO SALES

CARS UNDER \$150
All models. Seized and
auctioned by DEA, FBI,
IRS, banks, boats, com-
puters, furniture and
more. Available your
area. Call now!
1-800-451-0050
Ext. C199.

GOVERNMENT
SEIZED CARS
for pennies on the \$1.
Jaguar, Corvette, Mer-
cedes, BMW, 4 WD's.
Your area. Toll free
1-800-858-9778 Ext. A-
5139 for current listings.

SEIZED CARS
FROM \$175.
Porches, Cadillacs,
Chevys, BMW's,
Corvettes,
also Jeeps, 4 WD's.

Your
area. Toll free
1-800-858-9778
Ext. A-5139 for
current listings

AUTOS WANTED

SELL YOUR CAR BY
PHONE
We buy American &
Foreign cars, trucks,
& motorcycles.
Highest Prices Paid.
No Hassles No Fuss
if you can't come to us.
We'll come to you!
Call Tony 668-6213.

A.M. TOWING
Junk Cars Wanted
Free Tow-Away service
239-7894

JUNK CARS WANTED
"Free Tow-Away"
"Same Day Pick-Up"
(Most Cases)
S.O.S. TOWING
All Areas 759-8471

AUTO
WRECKERS

SCASH'S
FOR YOUR CAR
I'll Tow Your Junk Away
FREE!! Call Today!
Towing Service Avail.
Beeper 901-5470
or 483-4731

AUTO
WRECKERS

SCASH'S
FOR YOUR CAR
I'll Tow Your Junk Away
FREE!! Call Today!
Towing Service Avail.
Beeper 901-5470
or 483-4731

AUTO
WRECKERS

SCASH'S
FOR YOUR CAR
I'll Tow Your Junk Away
FREE!! Call Today!
Towing Service Avail.
Beeper 901-5470
or 483-4731

AUTO
WRECKERS

SCASH'S
FOR YOUR CAR
I'll Tow Your Junk Away
FREE!! Call Today!
Towing Service Avail.
Beeper 901-5470
or 483-4731

AUTO
WRECKERS

SCASH'S
FOR YOUR CAR
I'll Tow Your Junk Away
FREE!! Call Today!
Towing Service Avail.
Beeper 901-5470
or 483-4731

AUTO
WRECKERS

SCASH'S
FOR YOUR CAR
I'll Tow Your Junk Away
FREE!! Call Today!
Towing Service Avail.
Beeper 901-5470
or 483-4731

AUTO
WRECKERS

SCASH'S
FOR YOUR CAR
I'll Tow Your Junk Away
FREE!! Call Today!
Towing Service Avail.
Beeper 901-5470
or 483-4731

AUTO
WRECKERS

SCASH'S
FOR YOUR CAR
I'll Tow Your Junk Away
FREE!! Call Today!
Towing Service Avail.
Beeper 901-5470
or 483-4731

AUTO
WRECKERS

SCASH'S
FOR YOUR CAR
I'll Tow Your Junk Away
FREE!! Call Today!
Towing Service Avail.
Beeper 901-5470
or 483-4731

AUTO
WRECKERS

SCASH'S
FOR YOUR CAR
I'll Tow Your Junk Away
FREE!! Call Today!
Towing Service Avail.
Beeper 901-5470
or 483-4731

AUTO
WRECKERS

SCASH'S
FOR YOUR CAR
I'll Tow Your Junk Away
FREE!! Call Today!
Towing Service Avail.
Beeper 901-5470
or 483-4731

AUTO
WRECKERS

SCASH'S
FOR YOUR CAR
I'll Tow Your Junk Away
FREE!! Call Today!
Towing Service Avail.
Beeper 901-5470
or 483-4731

AUTO
WRECKERS

SCASH'S
FOR YOUR CAR
I'll Tow Your Junk Away
FREE!! Call Today!
Towing Service Avail.
Beeper 901-5470
or 483-4731

AUTO
WRECKERS

SCASH'S
FOR YOUR CAR
I'll Tow Your Junk Away
FREE!! Call Today!
Towing Service Avail.
Beeper 901-5470
or 483-4731

AUTO
WRECKERS

SCASH'S
FOR YOUR CAR
I'll Tow Your Junk Away
FREE!! Call Today!
Towing Service Avail.
Beeper 901-5470
or 483-4731

AUTO
WRECKERS

SCASH'S
FOR YOUR CAR
I'll Tow Your Junk Away
FREE!! Call Today!
Towing Service Avail.
Beeper 901-5470
or 483-4731

PERSONAL NOTICES

PRAYER
TO THE HOLY SPIRIT
Holy Spirit & St. Jude.
You who make me see
everything & who show
me the way to reach my
goals. You who give me
the divine gift to forgive
& forget the wrong that
is done to me. You who
are in all the instances of
my life with me. I in this
short dialogue, want to
thank You for everything &
confirm once more that I
must pray this prayer 3
consecutive days without
asking your wish, after
3rd day your wish will
be granted, no matter how
difficult it may be, then
promise to publish this
dialogue as soon as your
favor has been granted.

TALK TO
LIVE PSYCHICS!
ONE-ON-ONE!
Love, Money, The Future
1-900-288-1930
ext. 589, 53:05min. Av-
erage 4 mins. Touch-
tone. 18+ Avalon, 107
N. Federal Hwy, Fort
Lauderdale, FL 33304

WOULD YOU LIKE TO
LEARN MORE ABOUT
THE WORLD?
Host Scandinavian, Euro-
pean, Southern American,
Asian, Russian high school
students arriving August.
Become a Host Family/AISE.
1-800-SIBLING

CHILD CARE
WANTED
Babysitter/Light house-
keeping in Nutley.
Hrs. 11:15 - 12:30 Lunch
3:00 - 6:00. Must be de-
pendable, & non smoker.
\$125.00 wk. 222-1458

Kind, patient individual
to watch my two
children in my home.
Thurs, 1 day a week
from 12 to 3:30pm.
Great Salary!
Call 667-4918

Looking for a qualified
person to care for 2 small
children PT in my home.
Call Lori 235-0644

Nutley Senior citizen or
high schooler for after
school in my home 3-
5:30 to oversee 2 chil-
dren 12 & 10. 235-0298
leave mess

CHILD CARE
SERVICES
Infants/toddlers/pre-
school. State regis-
tered. Family daycare provider.
Sponsored by Programs
for Parents & reg. by
DYFS. Providing a safe,
healthy environment,
nutritional meals & T.C.
Loc. in Belleville.
Patti-450-4519

CHILD CARE
SERVICES
Infants/toddlers/pre-
school. State regis-
tered. Family daycare provider.
Sponsored by Programs
for Parents & reg. by
DYFS. Providing a safe,
healthy environment,
nutritional meals & T.C.
Loc. in Belleville.
Patti-450-4519

CHILD CARE
SERVICES
Infants/toddlers/pre-
school. State regis-
tered. Family daycare provider.
Sponsored by Programs
for Parents & reg. by
DYFS. Providing a safe,
healthy environment,
nutritional meals & T.C.
Loc. in Belleville.
Patti-450-4519

CHILD CARE
SERVICES
Infants/toddlers/pre-
school. State regis-
tered. Family daycare provider.
Sponsored by Programs
for Parents & reg. by
DYFS. Providing a safe,
healthy environment,
nutritional meals & T.C.
Loc. in Belleville.
Patti-450-4519

CHILD CARE
SERVICES
Infants/toddlers/pre-
school. State regis-
tered. Family daycare provider.
Sponsored by Programs
for Parents & reg. by
DYFS. Providing a safe,
healthy environment,
nutritional meals & T.C.
Loc. in Belleville.
Patti-450-4519

CHILD CARE
SERVICES
Infants/toddlers/pre-
school. State regis-
tered. Family daycare provider.
Sponsored by Programs
for Parents & reg. by
DYFS. Providing a safe,
healthy environment,
nutritional meals & T.C.
Loc. in Belleville.
Patti-450-4519

CHILD CARE
SERVICES
Infants/toddlers/pre-
school. State regis-
tered. Family daycare provider.
Sponsored by Programs
for Parents & reg. by
DYFS. Providing a safe,
healthy environment,
nutritional meals & T.C.
Loc. in Belleville.
Patti-450-4519

CHILD CARE
SERVICES
Infants/toddlers/pre-
school. State regis-
tered. Family daycare provider.
Sponsored by Programs
for Parents & reg. by
DYFS. Providing a safe,
healthy environment,
nutritional meals & T.C.
Loc. in Belleville.
Patti-450-4519

CHILD CARE
SERVICES
Infants/toddlers/pre-
school. State regis-
tered. Family daycare provider.
Sponsored by Programs
for Parents & reg. by
DYFS. Providing a safe,
healthy environment,
nutritional meals & T.C.
Loc. in Belleville.
Patti-450-4519

CHILD CARE
SERVICES
Infants/toddlers/pre-
school. State regis-
tered. Family daycare provider.
Sponsored by Programs
for Parents & reg. by
DYFS. Providing a safe,
healthy environment,
nutritional meals & T.C.
Loc. in Belleville.
Patti-450-4519

CHILD CARE
SERVICES
Infants/toddlers/pre-
school. State regis-
tered. Family daycare provider.
Sponsored by Programs
for Parents & reg. by
DYFS. Providing a safe,
healthy environment,
nutritional meals & T.C.
Loc. in Belleville.
Patti-450-4519

CHILD CARE
SERVICES
Infants/toddlers/pre-
school. State regis-
tered. Family daycare provider.
Sponsored by Programs
for Parents & reg. by
DYFS. Providing a safe,
healthy environment,
nutritional meals & T.C.
Loc. in Belleville.
Patti-450-4519

CHILD CARE
SERVICES
Infants/toddlers/pre-
school. State regis-
tered. Family daycare provider.
Sponsored by Programs
for Parents & reg. by
DYFS. Providing a safe,
healthy environment,
nutritional meals & T.C.
Loc. in Belleville.
Patti-450-4519

CHILD CARE
SERVICES
Infants/toddlers/pre-
school. State regis-
tered. Family daycare provider.
Sponsored by Programs
for Parents & reg. by
DYFS. Providing a safe,
healthy environment,
nutritional meals & T.C.
Loc. in Belleville.
Patti-450-4519

CHILD CARE
SERVICES
Infants/toddlers/pre-
school. State regis-
tered. Family daycare provider.
Sponsored by Programs
for Parents & reg. by
DYFS. Providing a safe,
healthy environment,
nutritional meals & T.C.
Loc. in Belleville.
Patti-450-4519

CHILD CARE
SERVICES
Infants/toddlers/pre-
school. State regis-
tered. Family daycare provider.
Sponsored by Programs
for Parents & reg. by
DYFS. Providing a safe,
healthy environment,
nutritional meals & T.C.
Loc. in Belleville.
Patti-450-4519

CHILD CARE
SERVICES
Infants/toddlers/pre-
school. State regis-
tered. Family daycare provider.
Sponsored by Programs
for Parents & reg. by
DYFS. Providing a safe,
healthy environment,
nutritional meals & T.C.
Loc. in Belleville.
Patti-450-4519

CHILD CARE
SERVICES
Infants/toddlers/pre-
school. State regis-
tered. Family daycare provider.
Sponsored by Programs
for Parents & reg. by
DYFS. Providing a safe,
healthy environment,
nutritional meals & T.C.
Loc. in Belleville.
Patti-450-4519

CHILD CARE
SERVICES
Infants/toddlers/pre-
school. State regis-
tered. Family daycare provider.
Sponsored by Programs
for Parents & reg. by
DYFS. Providing a safe,
healthy environment,
nutritional meals & T.C.
Loc. in Belleville.
Patti-450-4519

CHILD CARE
SERVICES
Infants/toddlers/pre-
school. State regis-
tered. Family daycare provider.
Sponsored by Programs
for Parents & reg. by
DYFS. Providing a safe,
healthy environment,
nutritional meals & T.C.
Loc. in Belleville.
Patti-450-4519

CHILD CARE
SERVICES
Infants/toddlers/pre-
school. State regis-
tered. Family daycare provider.
Sponsored by Programs
for Parents & reg. by
DYFS. Providing a safe,
healthy environment,
nutritional meals & T.C.
Loc. in Belleville.
Patti-450-4519

CHILD CARE
SERVICES
Infants/toddlers/pre-
school. State regis-
tered. Family daycare provider.
Sponsored by Programs
for Parents & reg. by
DYFS. Providing a safe,
healthy environment,
nutritional meals & T.C.
Loc. in Belleville.
Patti-450-4519

CHILD CARE
SERVICES
Infants/toddlers/pre-
school. State regis-
tered. Family daycare provider.
Sponsored by Programs
for Parents & reg. by
DYFS. Providing a safe,
healthy environment,
nutritional meals & T.C.
Loc. in Belleville.
Patti-450-4519

CHILD CARE
SERVICES
Infants/toddlers/pre-
school. State regis-
tered. Family daycare provider.
Sponsored by Programs
for Parents & reg. by
DYFS. Providing a safe,
healthy environment,
nutritional meals & T.C.
Loc. in Belleville.
Patti-450-4519

CHILD CARE
SERVICES
Infants/toddlers/pre-
school. State regis-
tered. Family daycare provider.
Sponsored by Programs
for Parents & reg. by
DYFS. Providing a safe,
healthy environment,
nutritional meals & T.C.
Loc. in Belleville.
Patti-450-4519

CHILD CARE
SERVICES
Infants/toddlers/pre-
school. State regis-
tered. Family daycare provider.
Sponsored by Programs
for Parents & reg. by
DYFS. Providing a safe,
healthy environment,
nutritional meals & T.C.
Loc. in Belleville.
Patti-450-4519

CHILD CARE
SERVICES
Infants/toddlers/pre-
school. State regis-
tered. Family daycare provider.
Sponsored by Programs
for Parents & reg. by
DYFS. Providing a safe,
healthy environment,
nutritional meals & T.C.
Loc. in Belleville.
Patti-450-4519

CHILD CARE
SERVICES
Infants/toddlers/pre-
school. State regis-
tered. Family daycare provider.
Sponsored by Programs
for Parents & reg. by
DYFS. Providing a safe,
healthy environment,
nutritional meals & T.C.
Loc. in Belleville.
Patti-450-4519

CHILD CARE
SERVICES
Infants/toddlers/pre-
school. State regis-
tered. Family daycare provider.
Sponsored by Programs
for Parents & reg. by
DYFS. Providing a safe,
healthy environment,
nutritional meals & T.C.
Loc. in Belleville.
Patti-450-4519

CHILD CARE
SERVICES
Infants/toddlers/pre-
school. State regis-
tered. Family daycare provider.
Sponsored by Programs
for Parents & reg. by
DYFS. Providing a safe,
healthy environment,
nutritional meals & T.C.
Loc. in Belleville.
Patti-450-4519

CHILD CARE
SERVICES
Infants/toddlers/pre-
school. State regis-
tered. Family daycare provider.
Sponsored by Programs
for Parents & reg. by
DYFS. Providing a safe,
healthy environment,
nutritional meals & T.C.
Loc. in Belleville.
Patti-450-4519

CHILD CARE
SERVICES
Infants/toddlers/pre-
school. State regis-
tered. Family daycare provider.
Sponsored by Programs
for Parents & reg. by
DYFS. Providing a safe,
healthy environment,
nutritional meals & T.C.
Loc. in Belleville.
Patti-450-4519

CHILD CARE
SERVICES
Infants/toddlers/pre-
school. State regis-
tered. Family daycare provider.
Sponsored by Programs
for Parents & reg. by
DYFS. Providing a safe,
healthy environment,
nutritional meals & T.C.
Loc. in Belleville.
Patti-450-4519

CHILD CARE
SERVICES
Infants/toddlers/pre-
school. State regis-
tered. Family daycare provider.
Sponsored by Programs
for Parents & reg. by
DYFS. Providing a safe,
healthy environment,
nutritional meals & T.C.
Loc. in Belleville.
Patti-450-4519

CHILD CARE
SERVICES
Infants/toddlers/pre-
school. State regis-
tered. Family daycare provider.
Sponsored by Programs
for Parents & reg. by
DYFS. Providing a safe,
healthy environment,
nutritional meals & T.C.
Loc. in Belleville.
Patti-450-4519

CHILD CARE
SERVICES
Infants/toddlers/pre-
school. State regis-
tered. Family daycare provider.
Sponsored by Programs
for Parents & reg. by
DYFS. Providing a safe,
healthy environment,
nutritional meals & T.C.
Loc. in Belleville.
Patti-450-4519

CHILD CARE
SERVICES
Infants/toddlers/pre-
school. State regis-
tered. Family daycare provider.
Sponsored by Programs
for Parents & reg. by
DYFS. Providing a safe,
healthy environment,
nutritional meals & T.C.
Loc. in Belleville.
Patti-450-4519

CHILD CARE
SERVICES
Infants/toddlers/pre-
school. State regis-
tered. Family daycare provider.
Sponsored by Programs
for Parents



50th SHOPRITE ANNIVERSARY

Part of your family for 50 years.

ANY SIZE PKG., TYSON/HOLLY FARMS

Over 1500 Items on Sale Every Week..

ShopRite and always Save!

GET THE CARD THAT EARNS YOU



FREE FOOD!

The ShopRite MasterCard® Card:
For people who eat.

Applications Available At The Courtesy Desk.
For more details, Call 1-800-401-9876

For the location of your nearest ShopRite Supermarket or Pharmacy Dept. Call 1-800-492-4173. 24 Hours A Day, 7 Days A Week!

5-LB. BOX

Boneless/Skinless Chicken Breast

U.S.D.A. A GRADE **1.99** lb.

Cooking Time
Grill 10 to 12 Minutes Total



144-OZ. T.W. CANS, MT. DEW OR REG., DIET OR CAFF. FREE

Pepsi 12-Pk.

ShopRite Sale Price **2.99** FINAL COST **1.99**

-1.00 MFR

PLUS DEP. WHERE REQ.

ShopRite Sale Price

CLIP & SAVE
Clip Less Coupon
LIMIT 1 Coupon

Thompson Seedless Grapes

ShopRite Sale Price **5.99** FINAL COST **3.99**

-2.00 SR

CLIP & SAVE
Clip Less Coupon
LIMIT 1 Coupon

The MEATing® Place

OVEN READY, CENTER CUT

Rib Steak or Roast

USDA CHOICE **3.99** lb.

Wood Handle Steak Knives **4 for \$3**

UNTRIMMED, BONELESS 7-9 LB. AVG., WHOLE

USDA SELECT **5.99** lb.

Beef Tenderloin For Filet Mignon

BEEF RIB **5.99** lb.

USDA CHOICE **5.99** lb.

Boneless Club Steak

HILLSHIRE FARMS, LITE, EXTRA TENDER, Turkey or Polska Kielbasa **2.49** 16-oz. pkg.

THIN CUT FROM LEG

Veal Cutlet For Scallopini

SAVE 2.00 PER LB. **5.99** lb.

5-LBS. OR MORE, MEATY, BREAST BONE REMOVED

Fresh Pork Spareribs **1.99** lb.

HAM & WATER PRODUCT, REDUCED SODIUM, COOK'S

Shank Portion Smoked Ham **1.19** lb.

WITH BACK VITACHED

Perdue Chicken Leg Quarters **.89** lb.

The Produce Place

14 SIZE

Fresh Broccoli

each **.89**

SUPER SELECT

Long Green Cucumbers **3.10** for

ADD COLOR TO YOUR MEAL

Le Rouge Peppers **1.49** lb.

ALL PURPOSE

Eastern 5-Lb. White Potatoes **1.79** bag

SWEET

California Strawberries

PINT **.99** 1-lb. cont. **1.79**

TRY ON CEREAL

Jersey Fresh Blueberries **1.79** pt.

SWEET & JUICY

California Peaches **.99** lb.

RED, BLACK OR GREEN

California Plums **.99** lb.

The Dairy Place

FROM CONCENTRATE, REGULAR OR COUNTRY STYLE

ShopRite Orange Juice

64-oz. cart. **.99**

ANY VARIETY SABOR LATINO OR

La Yogurt Yogurt **3.10** 6-oz. conts.

YELLOW OR WHITE

Borden Singles **1.99** 16-oz. pkg.

The Grocery Place

12-OZ. BOX

Kellogg's Special K

PRICE PLUS! club Members **1.84**

SAVE 1.05 PAY ONLY

MFR

UP TO 4 DISCOUNTS

15-OZ. CAN, SPAG. & MEATBALLS, BEEF/PORK OR RIGATONI IN MEAT SAUCE OR BEEF, CHEESE OR MINI PAVOLU

Chef-Boy-Ar-Dee Pasta **.59** 15-oz. can.

UP TO 4 DISCOUNTS PER VARIETY

REGULAR OR SANDWICH

ShopRite White Bread **.89** 22-oz. loaf

13-OZ. CAN. (EXCEPT DECAF), RED, BLUE OR MR. AUTOMATIC

Martinson Ground Coffee

PRICE PLUS! club Members **1.99**

SAVE .90 PAY ONLY

MFR

UP TO 4 DISCOUNTS PER VARIETY

2240 TOT. SHEET COUNT

Coronet 6-Pk. Bath Tissue **1.99** pkg.

WHY PAY MORE!™

Glad Cling Wrap **1.64** 300-ft. roll

Frozen Foods Place

SWEET

Birds Eye Cob Corn

1/2 PRICE **.99** 16-oz. pkg.

ANY VARIETY

Swift Brown n' Serve **2.30** 7 to 8 oz. pkgs.

GRADE 'A'

ShopRite Steak Fries **.99** 2-lb. pkg.

The Deli Place

REGULAR OR REDUCED FAT, KNOCKS OR

Hebrew National Franks

1/2 PRICE **1.59** 12-oz. pkg.

LOW SALT OR REGULAR

White's Sliced Bacon **1.99** 1-lb.

Health & Beauty Care

Revlon Flex Shampoo

PRICE PLUS! club Members **1.69**

SAVE .65 PAY ONLY

MFR

UP TO 4 DISCOUNTS PER VARIETY

1/2-GAL. CART., ANY VARIETY (EX. SLENDER TREATS) FROZEN YOGURT OR

Dolly Madison Ice Cream

ShopRite Sale Price **2.50** FINAL COST **1.25**

-1.25 MFR

CLIP & SAVE
Clip Less Coupon
LIMIT 1 Coupon

General Merchandise

Mead Wireless Notehok

1/2 PRICE **.74** 80 sheets

600 TOTAL SHEET COUNT

Coronet 6-Pk. Paper Towels

ShopRite Sale Price **3.99** FINAL COST **2.99**

-1.00 MFR

CLIP & SAVE
Clip Less Coupon
LIMIT 1 Coupon

The Fresh Fish Market

FARM RAISED, FRESH BONELESS

Atlantic Salmon Fillet

4.99 lb.

MARINATE & GRILL

Fresh Tuna Steaks **5.99** lb.

Fresh Bake Shoppe WHERE AVAILABLE

OATMEAL, RAISIN, PEANUT BUTTER, CHOC. CHIP, SUGAR OR M & M

The Appy Place

STORE SLICED, 98% FAT FREE, NATURAL JUICE MAPLE GLAZED OR

Black Bear Virginia Ham

4.99 lb.

ShopRite American Cheese **3.49** lb.

There's Nothing in the World like

Action Park

SAVE 5.00 OFF ADMISSION

With discount coupons available at ShopRite.

19th Annual NEW YORK RENAISSANCE FAIR

Weekends and Labor Day, July 27 thru Sept. 15, 1996. Sterling Forest, Tuxedo, NY

SAVE \$2.50 (ADULTS) - SAVE \$1.25 (CHILDREN)

When you purchase your advance tickets NOW ON SALE at the ShopRite CHECKOUT COUNTER

PKG. OF 5

Sub/Hoagie Rolls

1.49 15-oz

**MICRODEX
FILE SEPARATOR**

**MICRODEX
FILE SEPARATOR**

200-052885-1

200-052885-1

**MICRODEX
FILE SEPARATOR**

**MICRODEX
FILE SEPARATOR**